

AutoPack AP715-2

SERVICE MANUAL

Your System Configuration

Temperature Controls

Microprocessor

Tank Size

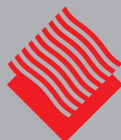
15 lb (6.8 kg) 2 gal (9.1 L)

Voltage Requirements

220 VAC, Single Phase, 20 A

Motor Rating

220 VAC, 86 RPM



**Hot Melt
Technologies, Inc.**
No One Puts It Together Like HMT®

1723 W. Hamlin Rd | Rochester Hills, MI 48309

248.853.2011 | www.hotmelt-tech.com



Intended Use

Benchmark® and ProFlex® adhesive melters and components are designed to melt and pump thermoplastic hot melt adhesives and sealants. Any other use is considered to be unintended. Hot Melt Technologies, Inc. (HMT) will not be liable for personal injury or property damage resulting from unintended use. Intended use includes the observance of HMT safety instructions. HMT recommends obtaining detailed information on the hot melt materials being used.

- The product is only intended for use in industrial applications and may only be used to melt and pump thermoplastic hot melt adhesives (e.g. EVA, PSA, APO, Polyamide).
- The product may only be installed, assembled, commissioned, operated, maintained, repaired, de-commissioned and disposed of by trained personnel.
- The product may only be operated with compatible original components and original accessories from HMT.
- The product is to be used exclusively for the purpose described herein and within the limits defined in this document. The product must not be modified with respect to its structure or its safety features without the written consent of HMT. No changes to the software or hardware of HMT products are permitted. Only use original spare parts, original accessories or standard parts that have been approved by HMT.

The instructions are part of this product. No applications other than those described in the instructions are permitted.

Improper Use

Examples of misuse of the product include:

- ▶ Melting and pumping of unsuitable adhesives (e.g. polyurethane reactive (P.U.R.) a.k.a. "Moisture Cured" adhesives)
- ▶ In defective condition
- ▶ With electrical cabinet open
- ▶ With the tank lid open
- ▶ Melting and pumping materials which, when under vacuum or pressure, can pose a health hazard or endanger safety in the workplace (e.g. solvents, explosive or highly flammable materials)
- ▶ Cleaning the product with highly flammable materials (e.g. solvents)
- ▶ Use in environments that require cleaning of the product with jets or sprays of water
- ▶ Processing of food

Residual Risks

In the design of the Benchmark® and ProFlex® systems, every measure was taken to protect personnel from potential danger. However, some residual risks cannot be avoided:

- ▶ Risk of burns from hot material
- ▶ Risk of burns when filling the tank, from the tank lid and exposed metal surfaces
- ▶ Risk of burns when conducting maintenance and repair work for which the melter or components must be heated up
- ▶ Material fumes may be hazardous; Always avoid direct inhalation





Table of Contents	3
Safety & Set Up	4-5
Operating Instructions.....	6-7
Front Panel Controls.....	6
Temperature and System Controls.....	7
Components	8-10
Exploded View.....	8
Tank Assembly 15 LB	9
Front Panel	10
Electrical	11-13
Fuse & Relay Chart.....	11
Hose & Gun Card	12
Schematic.....	13





STOP

If incorrectly used, this machine can cause severe injury. Those who use and maintain the machine should be trained in its proper use, warned of its dangers, and should read the entire manual before attempting to set up, operate, adjust or service the machine.

WARNING

- ▶ Do not allow the pump motor to stall. A prolonged stall may damage the motor and other components.
- ▶ Do not connect or disconnect electrical connectors, or remove components, with the power on. This will prevent arcing of electrical contacts and possible failure of components.
- ▶ Always close and secure the control panel access cover to protect internal electrical components.
- ▶ Always operate the system with the tank full and lid on.
- ▶ Prior to dismantling, assembly, or adjustment of certain service parts (hose/gun fittings, pump assemblies, etc.), the part(s) being serviced should be preheated to reduce the chance of stripping threads or ruining components.
- ▶ Working on or around hot melt adhesives and equipment can cause severe burns.
- ▶ Use eye protection, gloves and protective clothing while operating and/or servicing hot melt equipment.
- ▶ Before installing any hot melt equipment, determine proper electrical requirements per all applicable codes.

At Hot Melt Technologies, we pay special attention to the needs of operators and service personnel when designing equipment, but molten hot melt adhesives are dangerous and can cause severe burns. Extreme care must be exercised to insure personnel safety.

Fire, explosion, personal injury, property, and/or equipment damage can result if the material(s) used in or around any hot melt adhesive supply unit are toxic, heat, or fire sensitive. Always read the manufacturer's recommended use guidelines.

All HMT units are equipped with over temperature protection as a necessary safety device. Run-away heating can cause hot melt materials to exceed their flashpoint.



Prevent Serious Equipment Damage

Protect your hot melt equipment by installing a GFEP (Ground Fault Equipment Protector) device in your distribution panel.

HMT recommends that hot melt systems be protected from unintended line-to-ground currents by installing an appropriate ground fault equipment protection (GFEP) device. Contact HMT Technical Service & Support or a qualified electrical contractor for more information. When installing a GFEP device always comply with local electrical codes.

LEGEND: SAFETY SYMBOLS



Electric Shock Hazard: Line Voltage Present with Machine Power Off. Risk of electrical Shock or Burn



Disconnect Power Before Servicing



Consult Service Manual



Warning/Caution: Used to draw attention to Hot Surface Warnings, Over Temp Alarms, Hose Routing Practices, and other safety notifications.



Hot Surface: Surface and surrounding area may be hot. Exercise extreme caution and utilize proper Personal Protective Equipment (PPE).

Before Using Your Benchmark Hot Melt System

It is your responsibility and obligation to make sure your system:

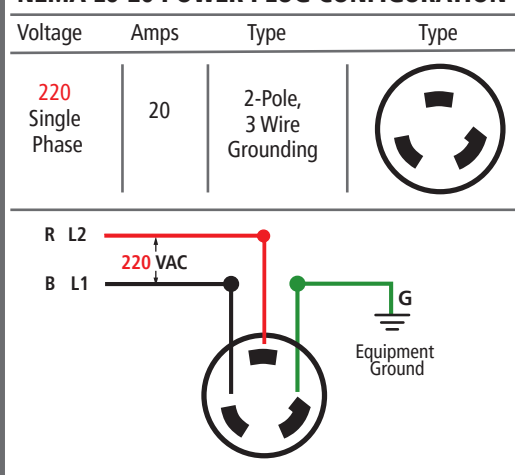
- ▶ Has been properly installed off the floor and on a steady, level work surface away from combustible materials.
- ▶ Has been located in such a way that the controls are away from the operator and that the control panel is securely closed at all times.
- ▶ Is the right capacity system for the intended use.
- ▶ Is connected to the proper power supply. (See Below).
- ▶ Is only used to do what a hot melt system is designed to do.
- ▶ Is not used by anyone unable to operate it properly.
- ▶ Is used in an area where the room temperature does not fall below 65 °F.
- ▶ Is used in an area which is free from blowing air caused by cooling fans, open doors or windows.

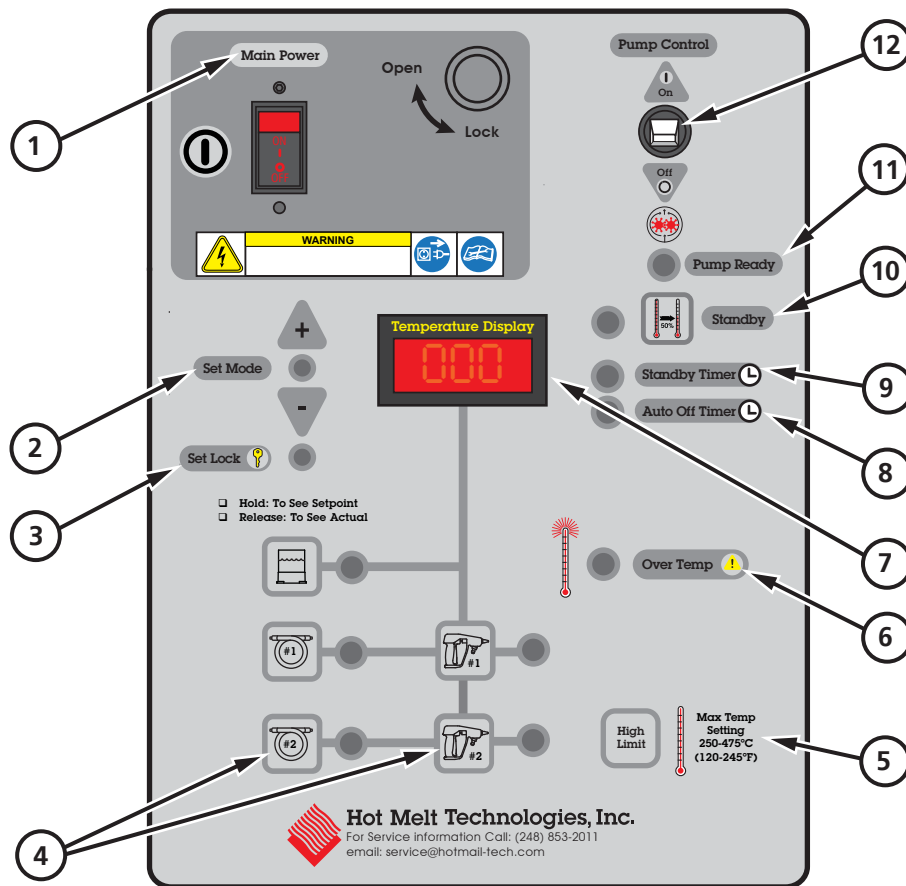
Basic Electrical Power Connections

For 220 VAC Operation

- ▶ A fused 20 A **220** VAC electrical supply is required. Performance problems will occur with voltages less than 208 VAC or greater than 240 VAC.
- ▶ Total amperage draw will depend on the final system configuration; number of hoses & length, guns, accessories, etc.
- ▶ **Do not** allow the system to share the same circuit with other electrical items. A dedicated supply is recommended.
- ▶ **Do not** use an extension cord.
- ▶ **If you change the configuration** of your system in any way that may affect the electrical requirements (ex. add a gun, longer hose, automate, etc.) call HMT Technical Service & Support at 248-853-2011 for assistance.

NEMA L6-20 POWER PLUG CONFIGURATION



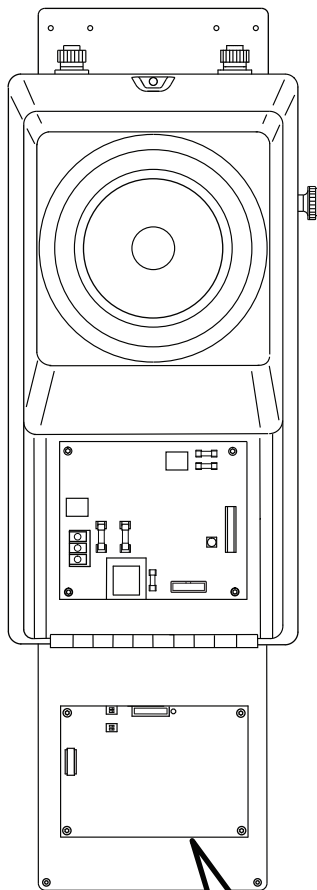


- 1 **Main Power Switch:** Turns the system "ON" or "OFF."
- 2 **Set Temperatures:** Press and hold the Tank, Hose, or Gun button for 2 seconds. When the Set Mode light illuminates, continue to hold the zone button and adjust the set temperature using the arrow keys. Set temperatures range from 100°F to high limit°F (38°C to high limit°C), in 5°F (1°C) increments.
- 3 **Set Lock:** Lit when feature is "ON." (See page 7).
- 4 **Turning On/Off Hose/Gun Zones:** To turn ON or OFF a Hose/Gun zone press and hold for three (3) seconds the Hose and Gun button for that zone. The temperature scan will skip a Hose/Gun zone that has been turned Off.
- 5 **High Limit:** See page 7.
- 6 **Over Temp:** If any zone reaches 25°F (15°C) above the High Limit, the Over Temp light will illuminate, and the system will shut off. The Temperature Display will read "OFF", and the light above the faulted zone will flash.
- 7 **Temperature Display:** During operation the actual temperatures scan every five (5) seconds. Press and release any zone button to display that zone's actual temperature.
- 8 **Auto Off:** If the Auto Off LED is ON, the system will automatically turn OFF after three (3) continuous hours of motor inactivity. If both the Auto Off and Auto Standby LEDs are ON the system will enter Standby Mode after three (3) continuous hours of motor inactivity and will turn OFF after six (6) continuous hours of motor inactivity.
- 9 **Auto Standby:** If the Auto Standby LED is ON, the system will automatically enter Standby Mode after three (3) continuous hours of motor inactivity. To activate Auto Standby set the Dip Switch on the back of the front panel to the ON position.
- 10 **Standby:** All temperatures lowered by 50%. Pump will not operate while in Standby.
- 11 **Pump Ready:** The pump will not operate until the actual tank temperature is within 25°F (15°C) of set temperature.
- 12 **Pump Control "ON/OFF" Switch:** Turns pump motor circuit "ON" or "OFF."



Temperature and System Controls

AutoPack AP715-2

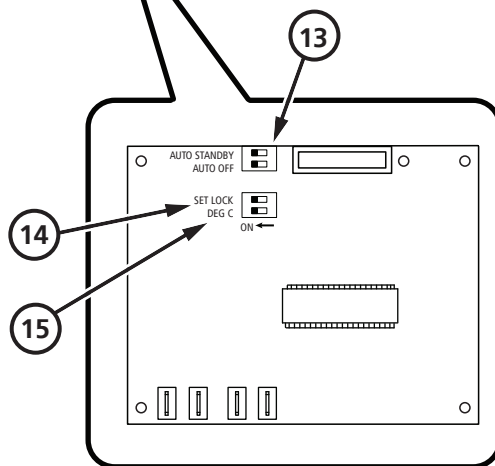


- 5 **High Limit:** The exclusive High Limit Feature limits the Set Point for any zone. This limit is adjustable between 250°F and 475°F.

To Adjust the High Limit: Turn the system off. Press and hold down the High Limit button and turn the Power Switch ON. The display will show the current High Limit.

Release the High Limit button and use the Arrow Keys to adjust High Limit Up or Down. Turn the Main Power Switch OFF then ON again.

All zones will default to the new High Limit and must be reset.



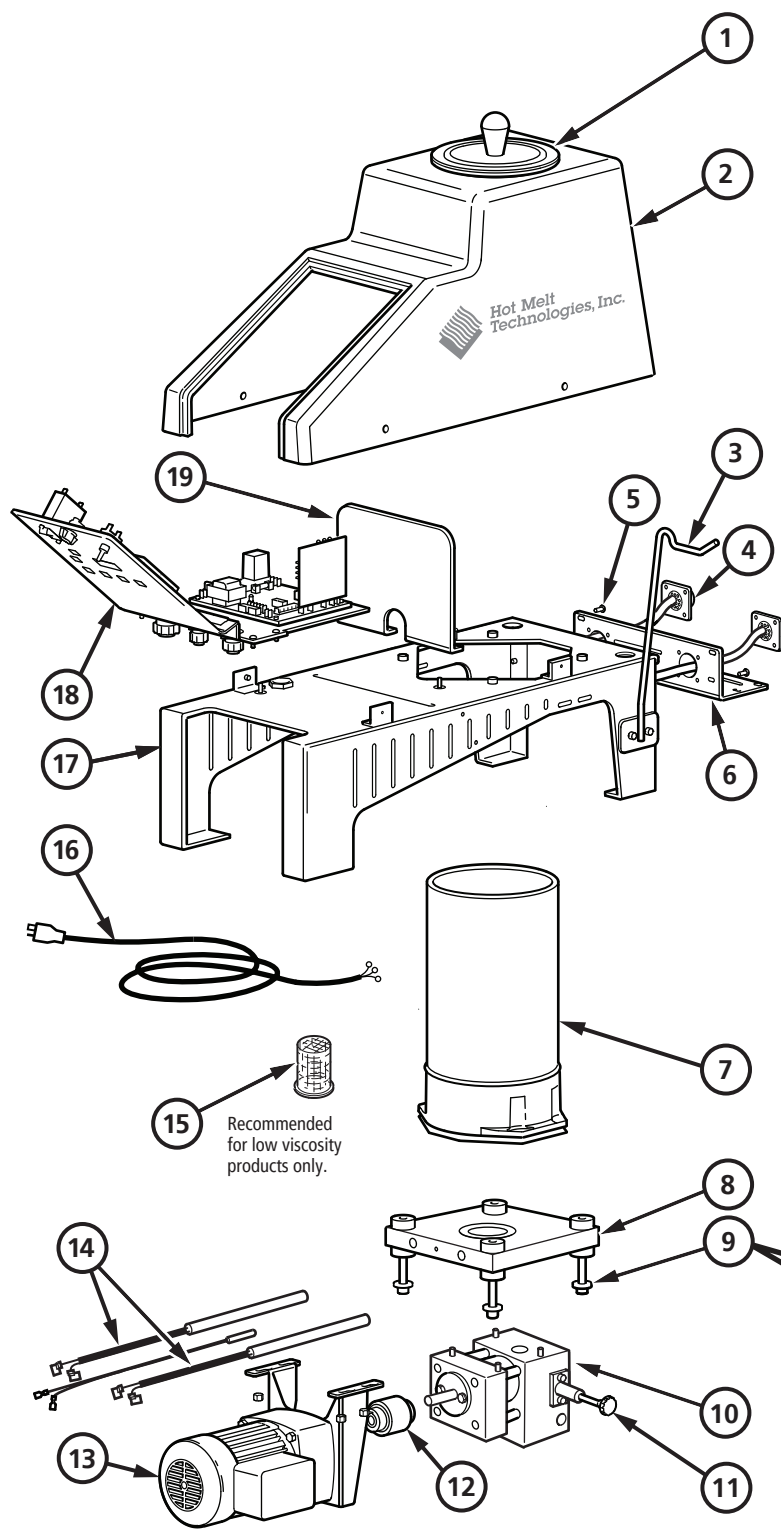
- 13 **Auto Standby and Auto OFF:** Slide dip switch left to turn on feature. Neither, either, or both features can be activated.

Note: If both are activated, the system will enter standby after three (3) hours, then OFF after six (6) hours.

- 14 **Set Lock:** Dip Switch used to lock or unlock set temperature adjustment.

- 15 **°F vs. °C:** Dip Switch used to change from °F or °C (default is Fahrenheit). For Celsius set the switch to "ON."

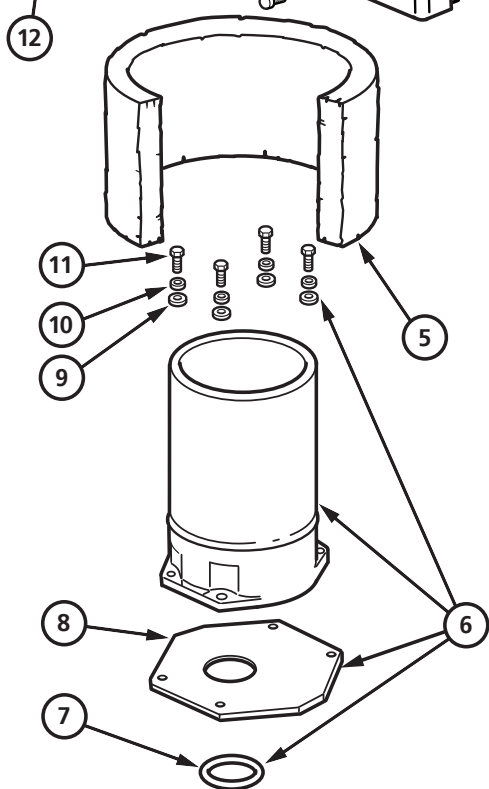




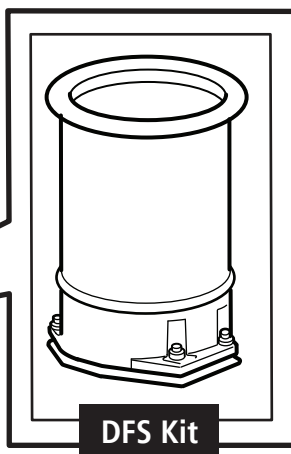
BILL OF MATERIALS

ITEM	DESCRIPTION	PART NO	QTY
1	Lid Assembly	911-004	1
2	Tank Shroud Assembly	345-016	1
3	Handgun Hanger Bar	330-012	1
4	Wire Harness, Hose, 220 VAC	927-250	2
5	10-32×1/2" Button Head Socket Screw	324-086	4
6	Hose Mounting Plate	330-051	1
7	DFS Tank Assembly	911-009	1
8	Tank Heater Plate	110-019	1
9	DFS Tank Heater Plate Mounting Kit	911-060	1
10	Pump Assembly	PA-40	1
11	DFS Accu-Flow™ Control	940-015	1
12	Motor Coupling Assembly	941-050	1
13a	Motor, Fixed RPM, AC, 220 VAC	941-240	1
13b	Motor, Variable RPM, AC	941-120	1
14	Tank Heater Assembly, 220 VAC, 1000 W	923-240	1
15	Tank Filter 1/4" Mesh (Optional)	420-061	1
16	Power Cord 220 VAC, 20 A	922-184	1
17	Benchmark Base Assembly	330-050	1
18	Control Panel Assembly, 220 VAC	934-720	1
19	Heat Shield	330-055	1

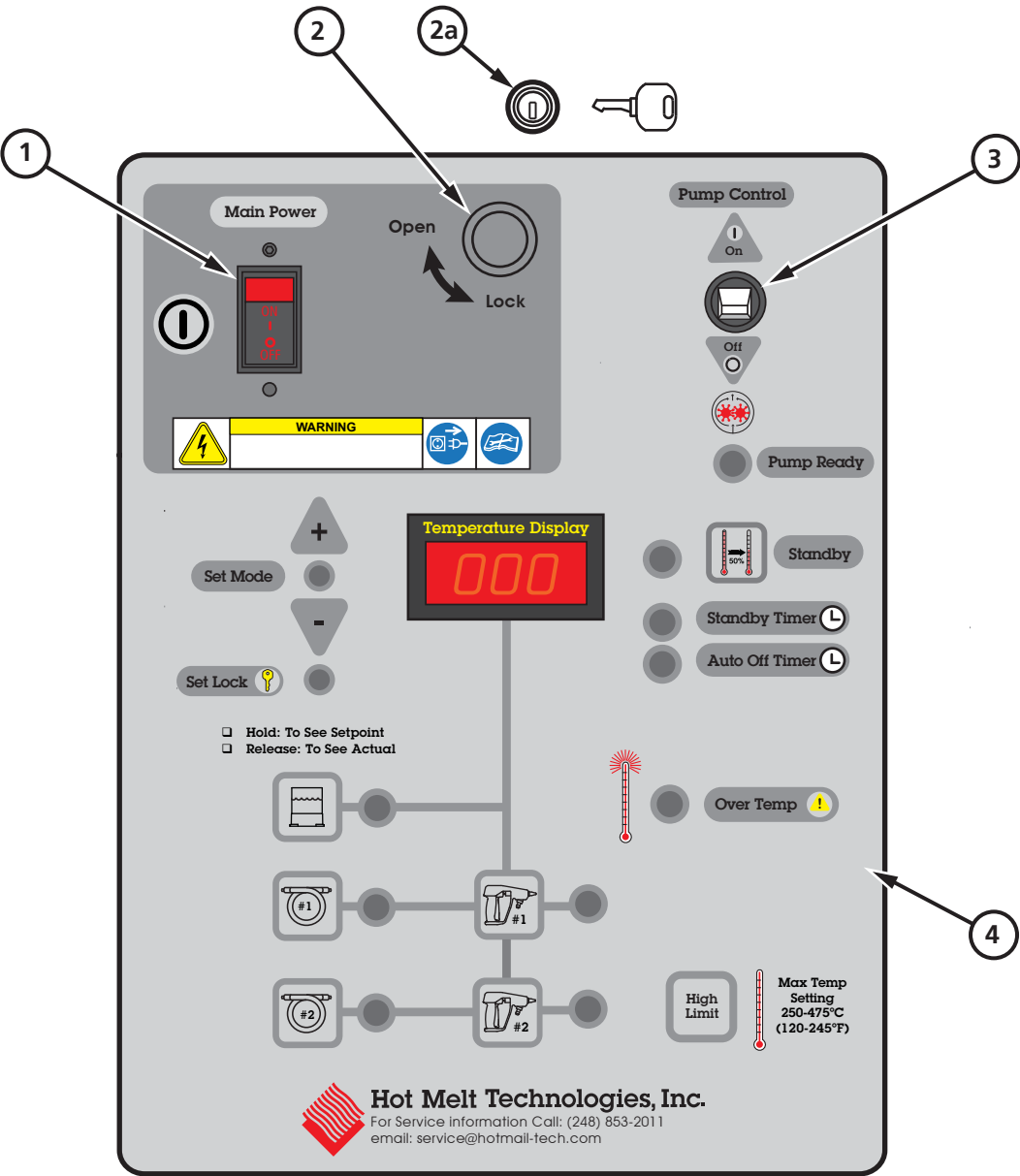




BILL OF MATERIALS			
ITEM	DESCRIPTION	PART NO	QTY
1	Tank Lid 7"	911-004	1
2	Tank Seal 7"	510-015	1
3	Metal Shroud	345-016	1
4	Tank Filter 1/4" Mesh (Optional)	420-061	1
5	Tank Insulation	450-001	1
6	DFS Tank Assembly	911-009	1
7	O-Ring - Teflon Encapsulated	520-031	1
8	Tank Gasket	510-024	1
9	1/4" Flat Washer	315-007	4
10	1/4" Lock Washer	316-007	4
11	1/4-20×7/8" Socket Head Cap Screw	322-104	4
12	10-32×1/2" Button Head Socket Screw	324-086	4



Item 2 included
in DFS Kit



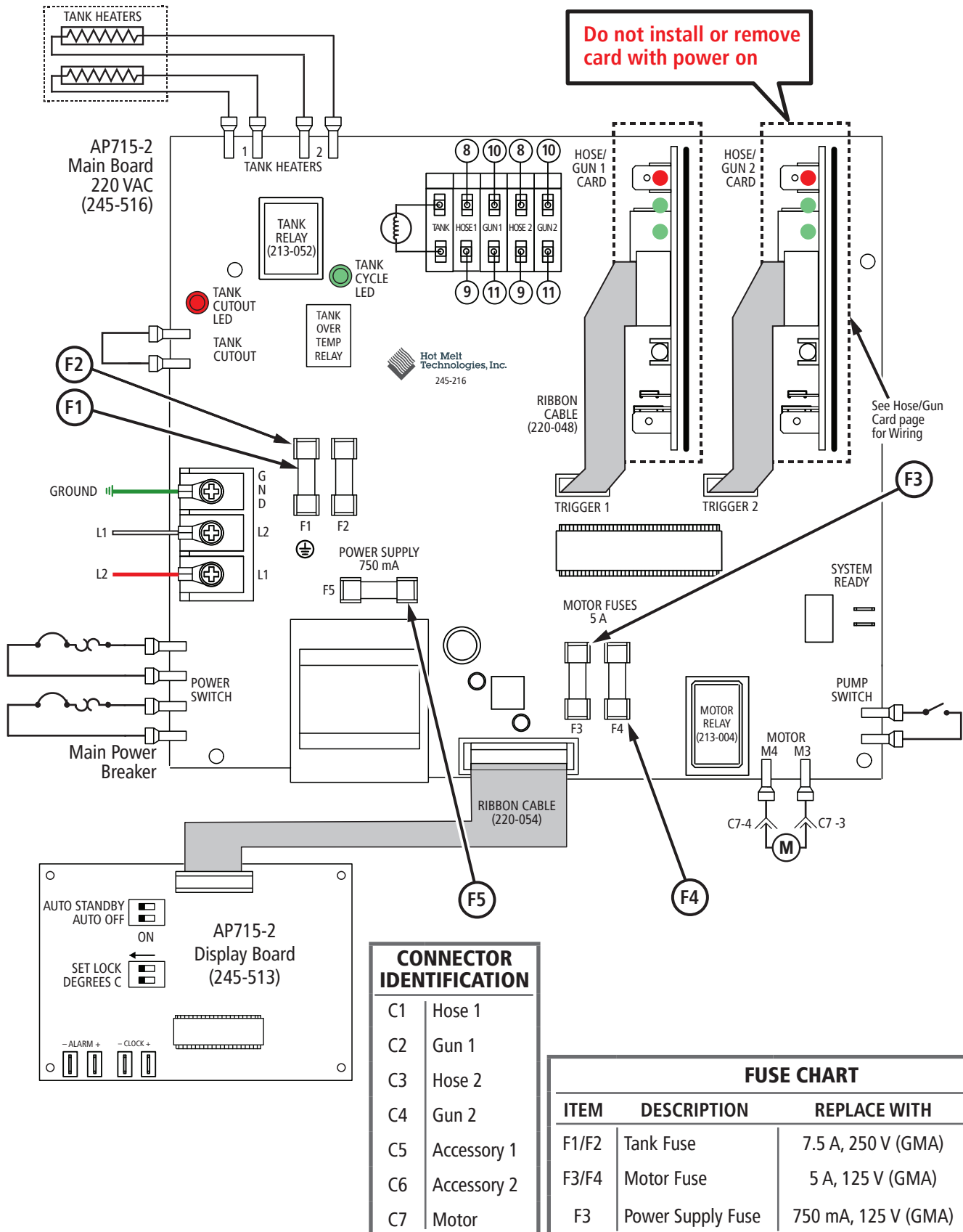
BILL OF MATERIALS			
ITEM	DESCRIPTION	PART NO	QTY
1	Main Power Switch 20 A, 220 VAC	211-220	1
2	Front Panel Latch	340-030	1
2a	Optional Locking Latch	340-032	1
3	Pump Switch 10 A, 120 VAC	211-010	1
4	Decal	340-179	1





Fuse & Relay Chart

AutoPack AP715-2

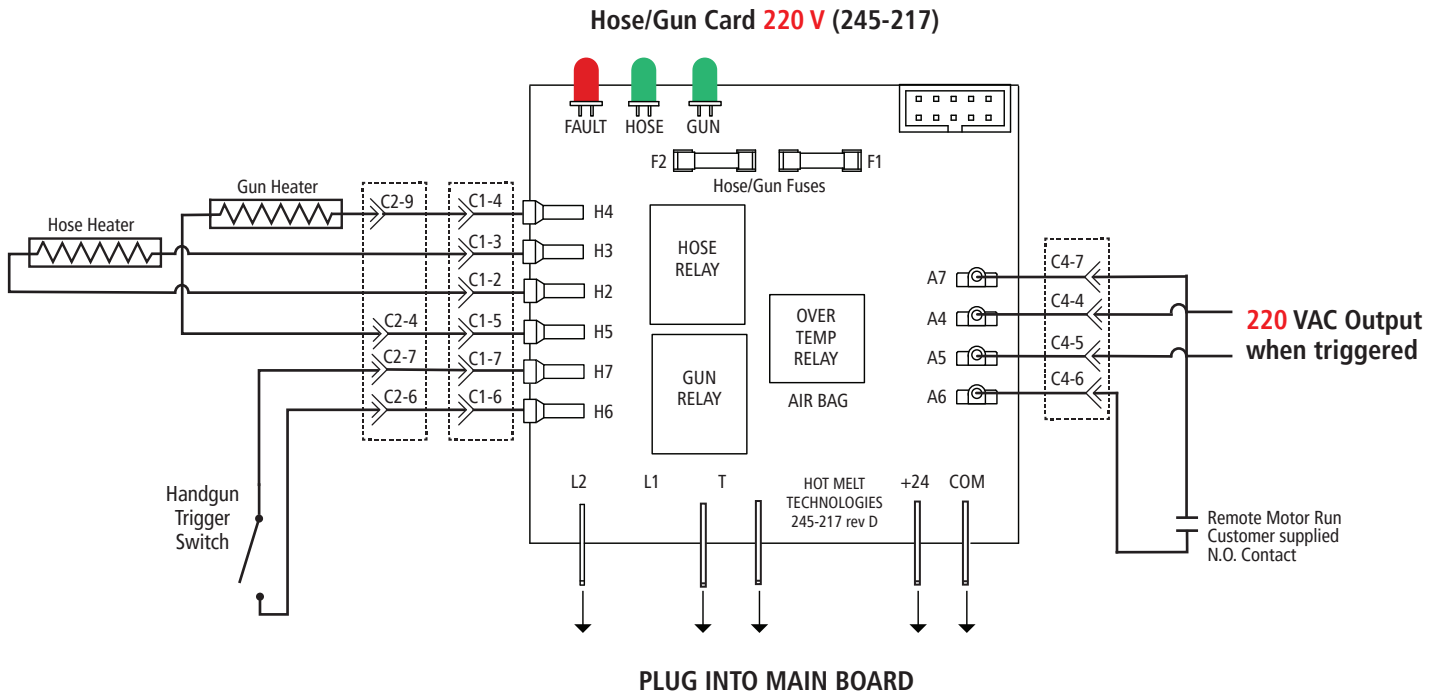




- Green LED:**

 - ON Steady = Calling for heat
 - Blinking = At temperature
 - OFF = No input from RTD
- Red LED:**

 - Red LED = Hose or Gun sensor fault or over temp



FUSE CHART			
ITEM	DESCRIPTION	REPLACE WITH	PART NO
F1/F2	Hose/Gun Fuse	8 A, 250 V (AGC)	214-108

SYMBOL LEGEND

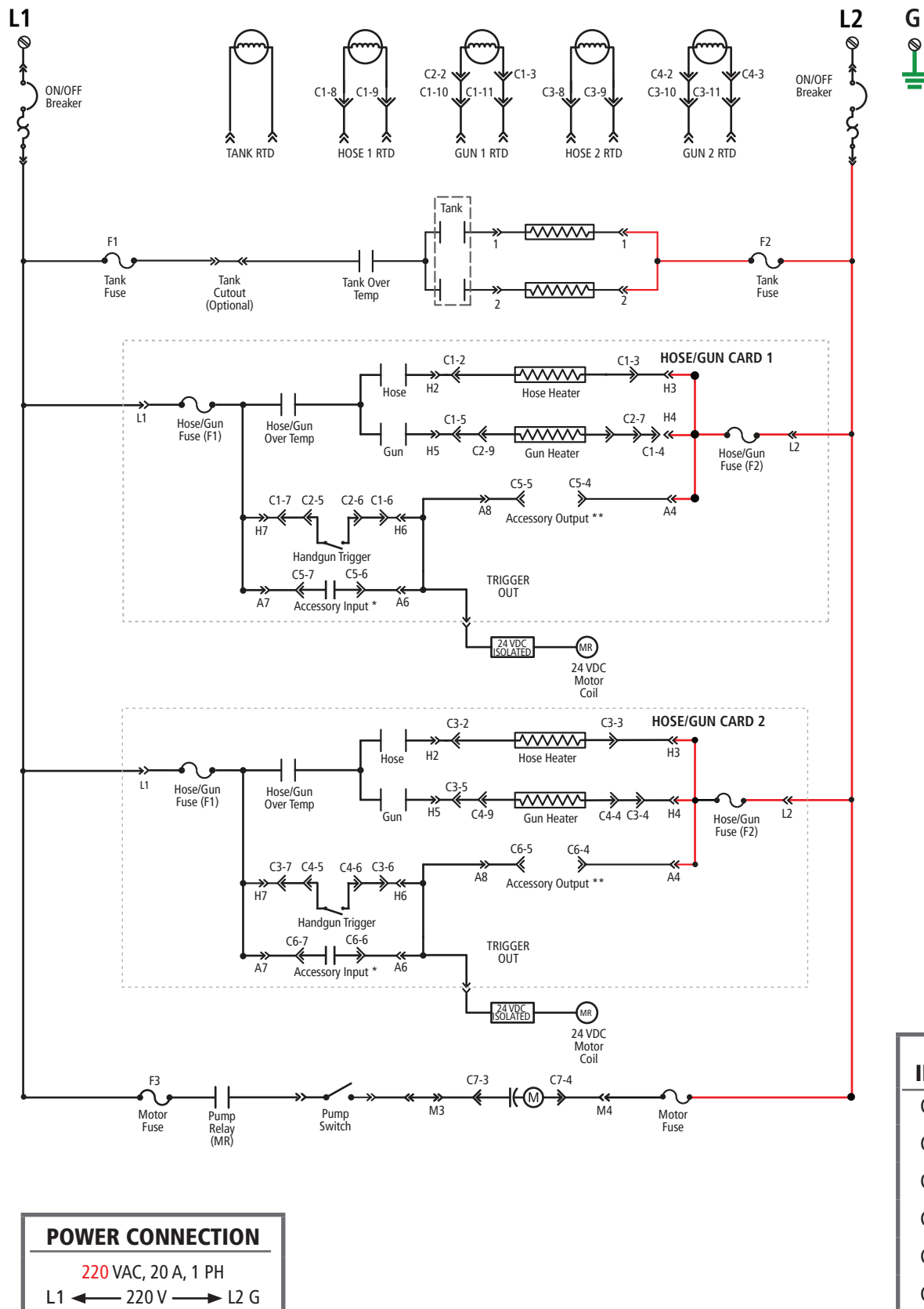
	Relay Contacts (Normally Open)		Board Mounted Fuse
	Relay Description		Fuse Description
	Relay Contacts (Normally Closed)		RTD Temperature
	AMP Connector & Pin Number		Capacitor and Motor
	AMP Quick Disconnect		"ON/OFF" Breaker Switch
	Stakon Connector		Heater
	Switch		Coil
	Wire Termination		





Schematic

AutoPack AP715-2





This Warranty extends to the original purchaser only and commences on the date of the original purchase.

Any part of the Hot Melt Technologies (HMT) adhesive supply unit (ASU) manufactured by HMT and found in the reasonable judgement of HMT to be defective in material and workmanship, will be repaired or replaced by HMT without charge for parts or labor.

This Warranty is limited to:

- a) One (1) year from initial use,
- b) Eighteen (18) months from date of purchase, or
- c) Two thousand (2,000) hours of use, whichever comes first.

The ASU including any defective part must be returned to HMT within the warranty period. All transportation expenses to HMT for warranty work and the expense of returning it to the owner will be paid for by the owner. HMT's responsibility in respect to claims is limited to (at its option) making the required repairs, adjustment, or replacements. No claim of breach of warranty shall be cause for cancellation of the contract of sale of any HMT ASU.

This warranty does not cover any ASU that has been subject to misuse, abuse, negligence, or accident, or which has been operated in any way contrary to the operating instructions. Warranty does not apply to any damage to the ASU that is the result of improper maintenance or installation.

This warranty does not cover any ASU that has been altered or modified by the customer. In addition, the warranty does not extend to repairs made necessary by normal wear or by the use of hot melt materials in the ASU which in the reasonable opinion of HMT are either incompatible with the ASU or adversely affect its operation, performance, or durability. This warranty does not extend to any accessory attachments to the ASU that are warranted separately for different periods of time. Other components supplied by HMT as part of a system will carry the warranty of the original manufacturer.

This warranty does not extend to an ASU damaged during shipment. Risk of loss or damage to the ASU shall pass to the buyer.

HMT reserves the right to change or improve the design of any ASU, or part of an ASU, without assuming any obligation to modify any ASU previously manufactured.

HMT assumes no responsibility for incidental, consequential or other damages including but not limited to: expense for hot melts, delivery or return freight expenses, mechanics travel time, telephone or telegraph charges, rental of a like product during the time warranty repairs are being performed, travel, loss or damage to personal property, loss of revenue, loss of use of the ASU, loss of time or inconvenience.