



# Pump Assembly PA-40

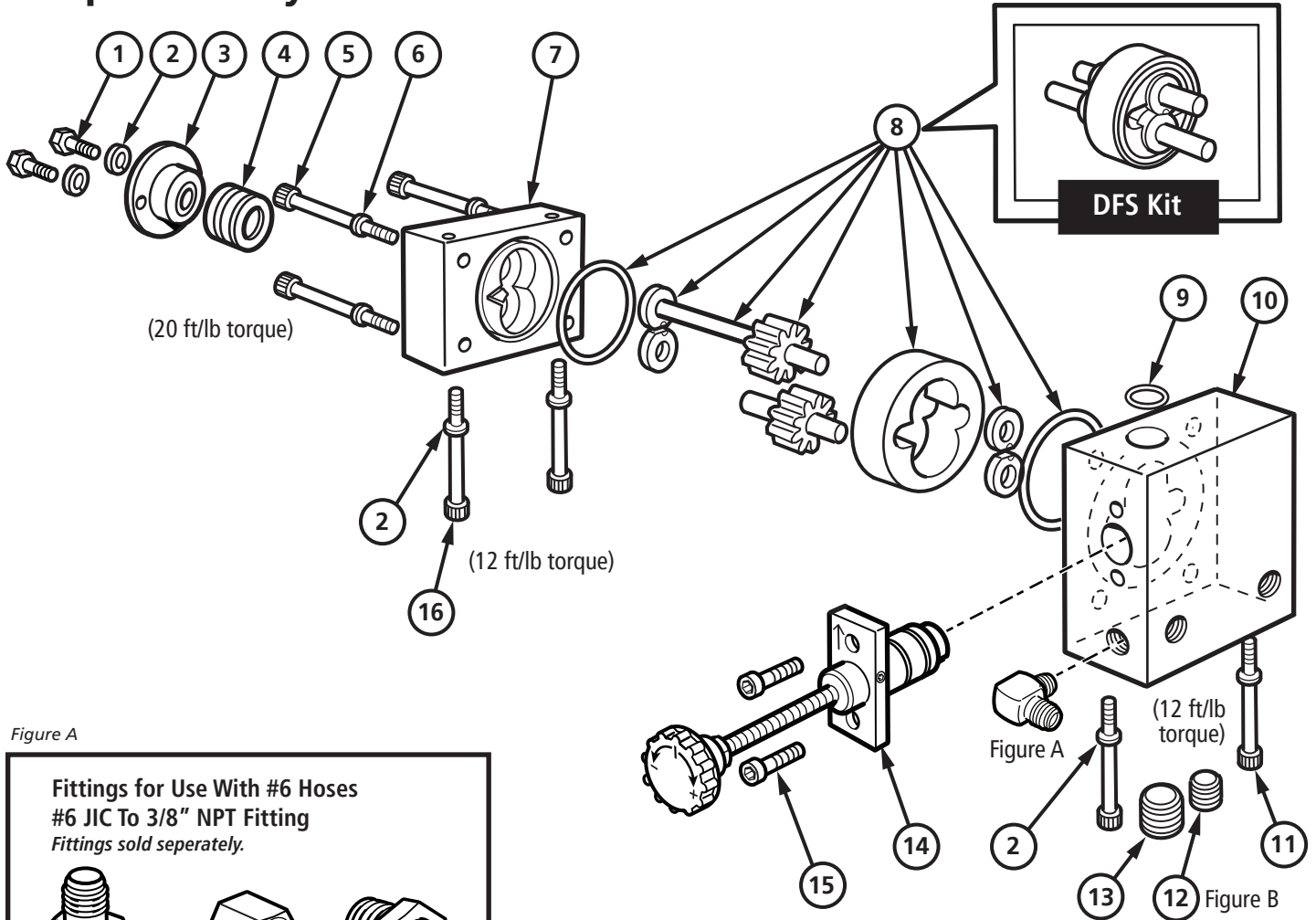


Figure A

**Fittings for Use With #6 Hoses**  
**#6 JIC To 3/8" NPT Fitting**  
*Fittings sold seperately.*

160-029 90° Elbow      160-216 Cap      160-086 Straight

**Fittings for Use With #8 Hoses**  
**#8 JIC To 3/8" NPT Fitting**

160-032 90° Elbow      160-218 Cap      160-087 Straight

Figure B

**Filter Option**

942-055  
 DFS Pump  
 Filter Assembly  
 20 Mesh

| BILL OF MATERIALS |                                       |         |     |
|-------------------|---------------------------------------|---------|-----|
| ITEM              | DESCRIPTION                           | PART NO | QTY |
| 1                 | 1/4-20 X 1-1/4" Hex Head Bolt         | 328-005 | 2   |
| 2                 | 1/4" Lock Washer                      | 316-007 | 6   |
| 3                 | Packing Retainer                      | 420-002 | 1   |
| 4                 | Chevron Seal                          | 510-020 | 1   |
| 5                 | 5/16-18 X 2-1/2" Socket Hd. Cap Screw | 322-167 | 4   |
| 6                 | 1/4" High Collar Lock Washer          | 316-024 | 4   |
| 7                 | End Plate                             | 420-082 | 1   |
| 8                 | DFS Pump Kit, PA-40                   | 942-040 | 1   |
| 9                 | O-Ring, Teflon Encapsulated           | 520-010 | 1   |
| 10                | Inlet Plate                           | 420-080 | 1   |
| 11                | 1/4-20 X 4 3/4" Socket Head Cap Screw | 322-119 | 2   |
| 12                | 3/8" NPT Pipe Plug                    | 160-191 | 2   |
| 13                | 1/2" NPT Pipe Plug                    | 160-193 | 1   |
| 14                | DFS Accu-Flow™ Flow Control           | 940-015 | 1   |
| 15                | 1/4-20 X 5/8" Socket Hd. Cap Screw    | 322-102 | 2   |
| 16                | 1/4-20 X 4" Socket Hd. Cap Screw      | 322-116 | 2   |

