



Your
System
Configuration

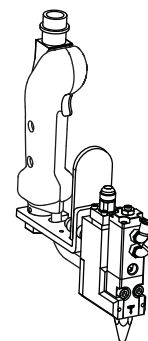


Description

FP-600-R-1, 120VAC

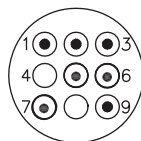
FP-600-R-2, 220VAC

FP-600-R-X Flat Panel Gun



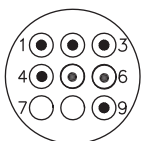
Technical Information

110 Volt



PIN#	CONNECTION
1	GROUND (GREEN)
2	RTD (BLUE)
3	RTD (BLUE)
4	---
5	TRIGGER (BROWN)
6	TRIGGER (BROWN)
7	NEUTRAL (WHITE)
8	---
9	POWER (BLACK)

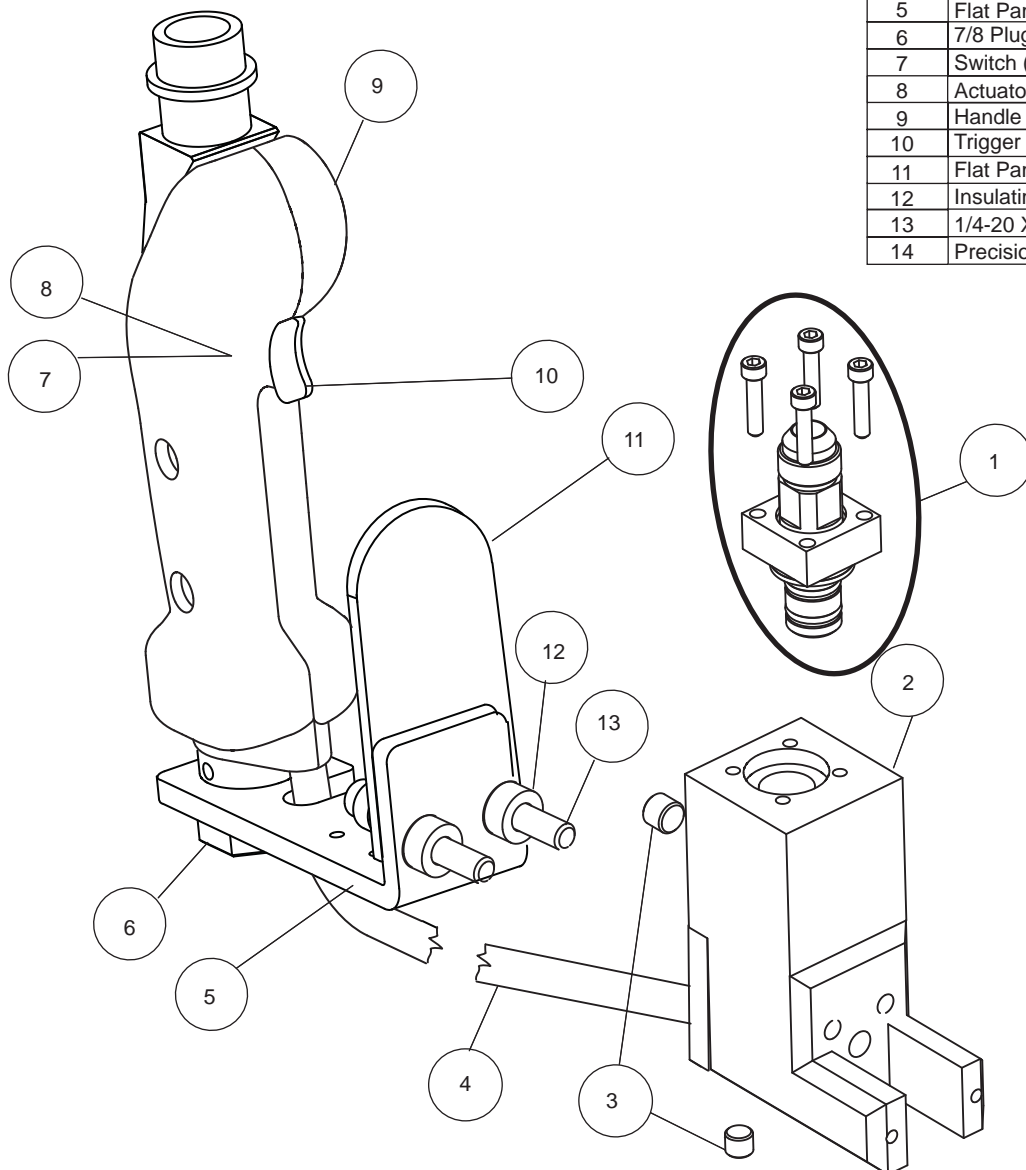
220 Volt



PIN#	CONNECTION
1	GROUND (GREEN)
2	RTD (BLUE)
3	RTD (BLUE)
4	POWER (RED)
5	TRIGGER (BROWN)
6	TRIGGER (BROWN)
7	---
8	---
9	POWER (BLACK)

BILL OF MATERIALS

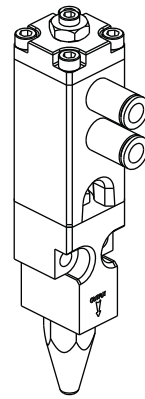
ITEM	DESCRIPTION:	PART NO.	QTY.
1	JIC Swivel Assembly	912-546	1
2	Manifold Block	130-031	1
3	1/16 NPT Pipe Plug	160-196	2
4A	Heater Harness 110 Volt, 150W	913-045	1
4B	Heater Harness 220 Volt, 150W	913-245	1
5	Flat Panel Gun Bracket	130-085	1
6	7/8 Plug, Straight Thread	160-201	1
7	Switch (inside handle)	211-073	1
8	Actuator Lever (inside handle)	211-074	1
9	Handle	130-081	1
10	Trigger	130-082	1
11	Flat Panel Mount, Straight	130-083	1
12	Insulating Washer	540-013	4
13	1/4-20 X 1 1/4" Cap Screw	322-106	2
14	Precision Washer (not seen)	130-039	2



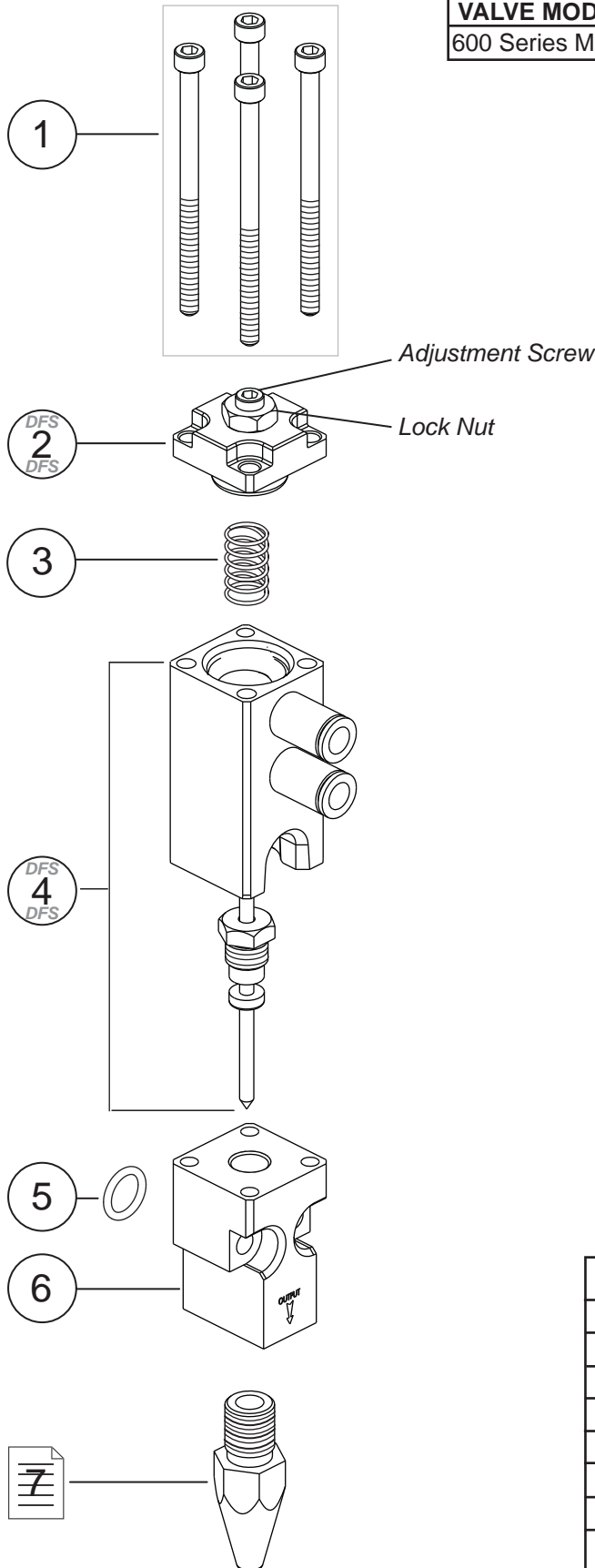
Hot Melt Technologies, Inc.

600 Series Valve Module Assembly

Technical Information



VALVE MODULE	PART NO
600 Series Module	913-020



SERVICE INFORMATION

Needle Stroke Adjustment:

Adjusts how far the needle lifts off the needle seat/nozzle when activated.

How to Adjust:

1. Loosen the 7/16" lock nut.
2. Using a 1/8" allen wrench, turn the adjustment screw clockwise until the needle makes contact with the needle seat/nozzle.

CAUTION: Do not overtighten, only make contact.

3. Back the adjustment screw out (counter clockwise) until the appropriate flow for your application is reached. Maximum flow for low viscosity hot melts is typically 1/4 - 1/2 turn. Maximum flow for most other hot melts is 1 - 2 full turns.

NOTE: Shorter stroke = longer seal life.

4. Carefully tighten the lock nut while holding the adjustment screw in place.

Activation Air Pressure:

80 - 120 psi clean, dry, non-oiled air must be used.

NOTE: Air Pressure less than 80 psi may cause sluggish cycling and/or leaks.

BILL OF MATERIALS

ITEM	DESCRIPTION	PART NO	QTY
1	Socket Head Cap Screw 8-32 X 2 1/2"	322-040	4
2	DFS AV Stroke Adjustment Cap	913-006	1
3	AV Piston Return Spring	130-045	1
4	DFS AV-600 Piston Needle Kit	913-025	1
5	O'ring	520-023	1
6	AV Fluid Valve Body	130-041	1
7	600 Series Nozzle	See Nozzle Sheet	1

Hot Melt Technologies, Inc.