



# Pump Assembly PA-40

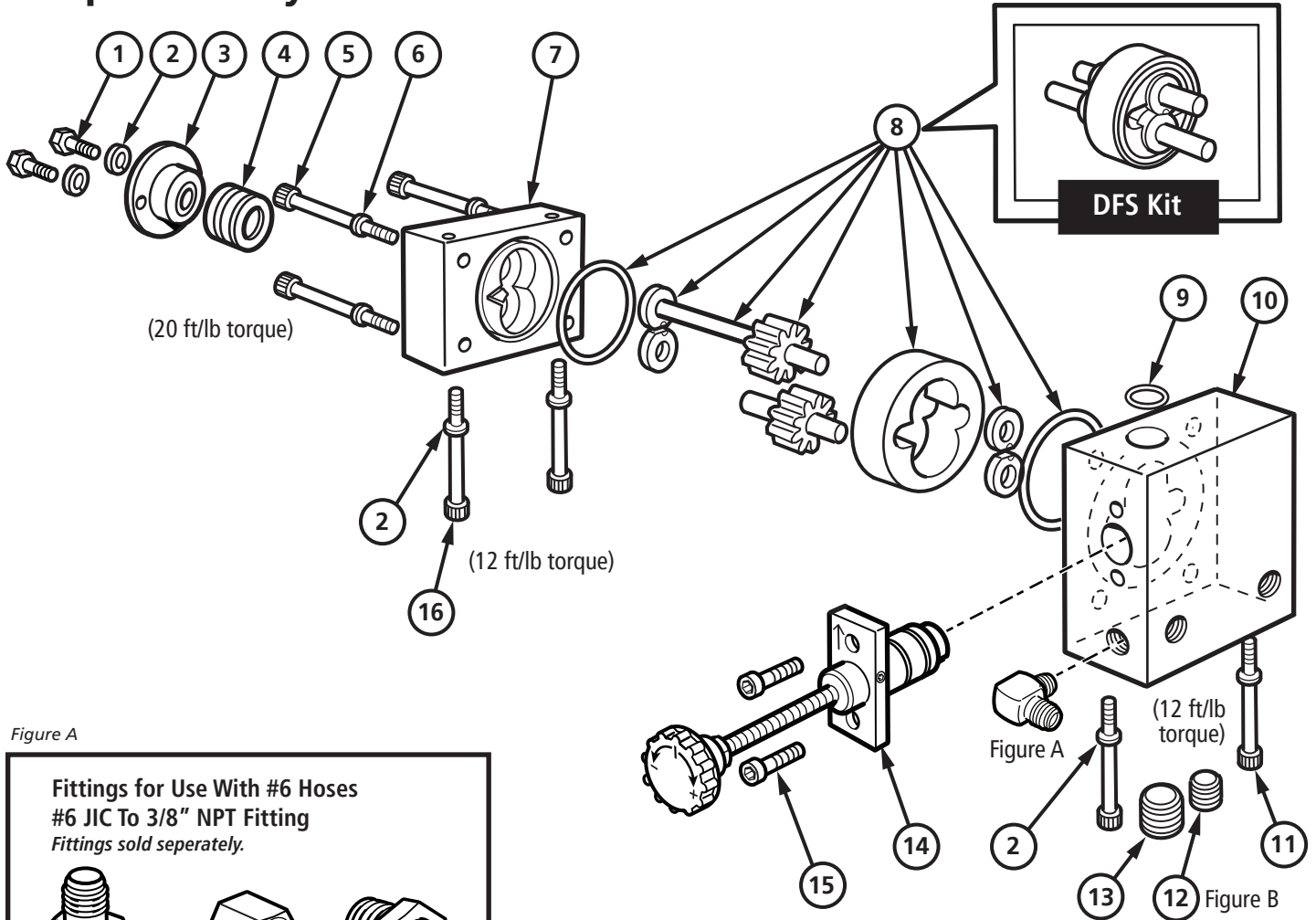


Figure A

**Fittings for Use With #6 Hoses**  
**#6 JIC To 3/8" NPT Fitting**  
*Fittings sold seperately.*

160-029 90° Elbow      160-216 Cap      160-086 Straight

**Fittings for Use With #8 Hoses**  
**#8 JIC To 3/8" NPT Fitting**

160-032 90° Elbow      160-218 Cap      160-087 Straight

Figure B

**Filter Option**

942-055  
 DFS Pump  
 Filter Assembly  
 20 Mesh

BILL OF MATERIALS			
ITEM	DESCRIPTION	PART NO	QTY
1	1/4-20 X 1" Hex Head Bolt	328-004	2
2	1/4" Lock Washer	316-007	6
3	Packing Retainer	420-002	1
4	Chevron Seal	510-020	1
5	5/16-18 X 2-1/2" Socket Hd. Cap Screw	322-167	4
6	1/4" High Collar Lock Washer	316-024	4
7	End Plate	420-082	1
8	DFS Pump Kit, PA-40	942-040	1
9	O-Ring, Teflon Encapsulated	520-010	1
10	Inlet Plate	420-080	1
11	1/4-20 X 4 3/4" Socket Head Cap Screw	322-119	2
12	3/8" NPT Pipe Plug	160-191	2
13	1/2" NPT Pipe Plug	160-193	1
14	DFS Accu-Flow™ Flow Control	940-015	1
15	1/4-20 X 5/8" Socket Hd. Cap Screw	322-102	2
16	1/4-20 X 4" Socket Hd. Cap Screw	322-116	2

