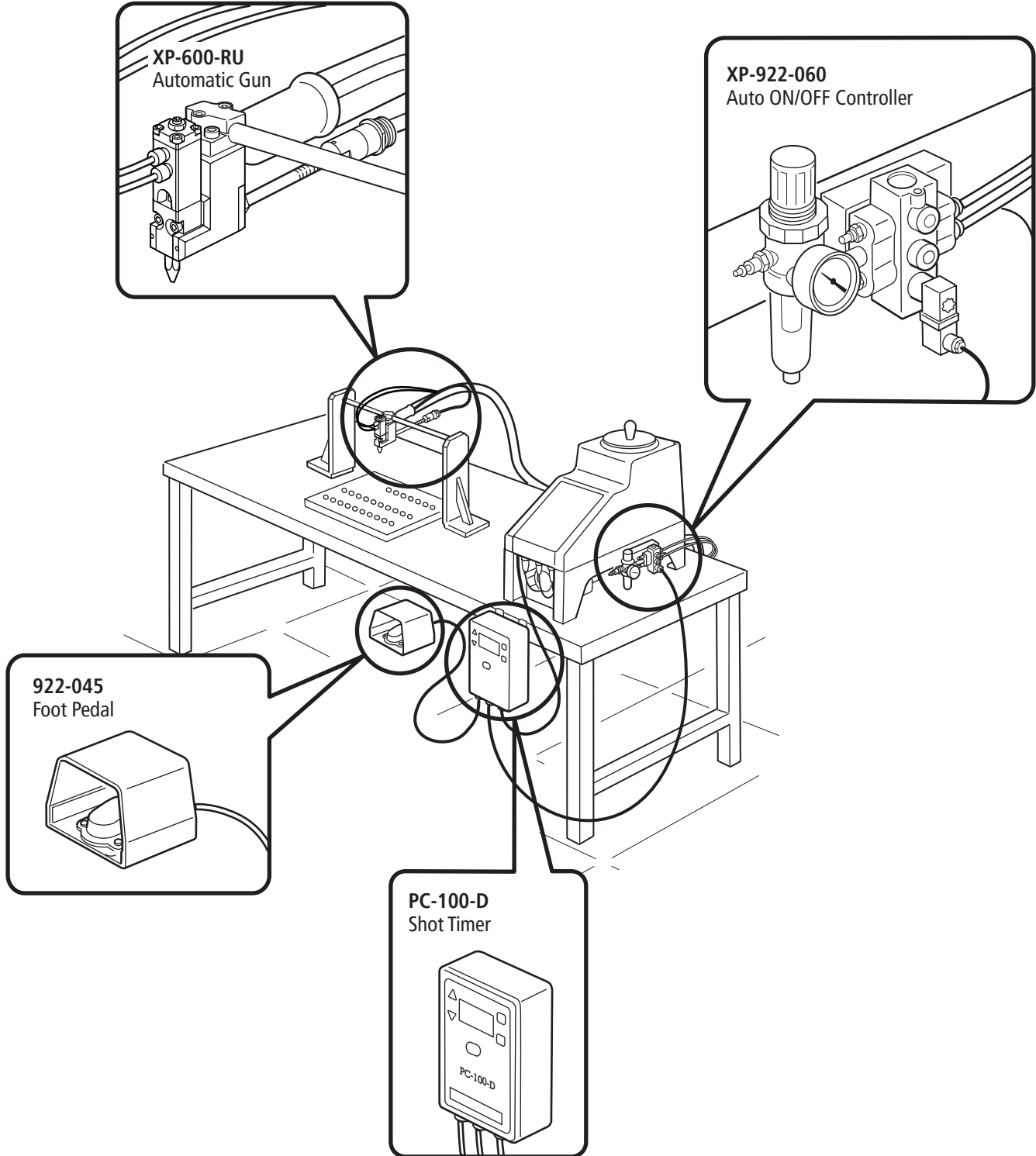




PC-100-D Programmable Shot Timer

PC-100-D-XPBM, 220 VAC

PC-100-D-G569, 220 VAC

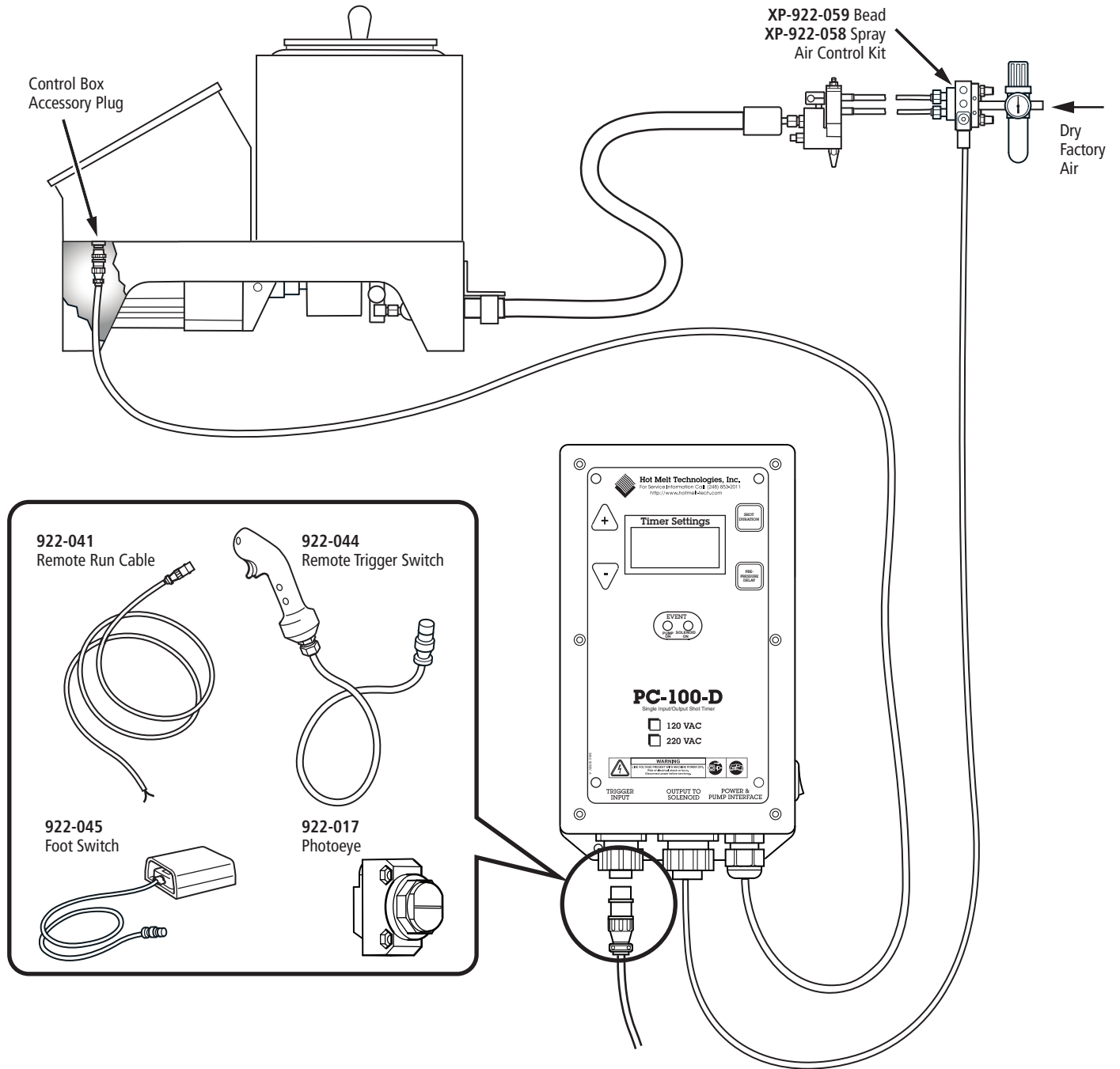




PC-100-D Programmable Shot Timer

PC-100-D-XPBM, 220 VAC

PC-100-D-G569, 220 VAC



1. Plug Timer into accessory of control box on hot melt unit (accessory #1 for hose #1 or accessory #2 for hose #2).
2. Turn Power "ON."
3. Adjust Pump delay and Shot time, using the PC-100-D instructions.
4. Pull and Hold trigger on gun until shot is dispensed.
5. Repeat application.

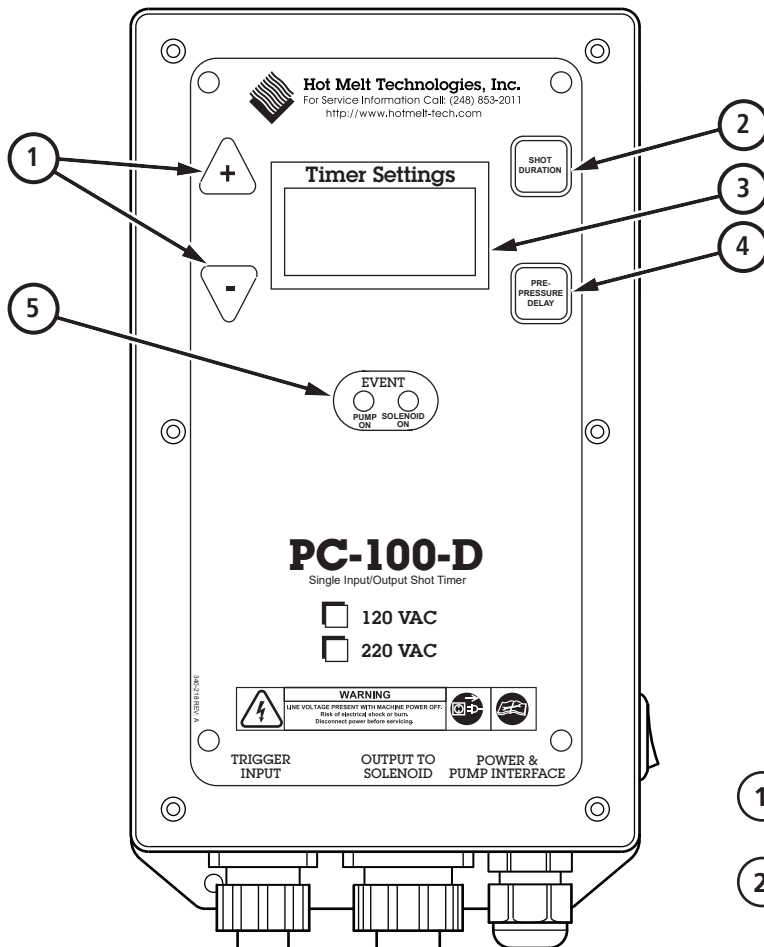




PC-100-D Programmable Shot Timer

PC-100-D-XPBM, 220 VAC

PC-100-D-G569, 220 VAC



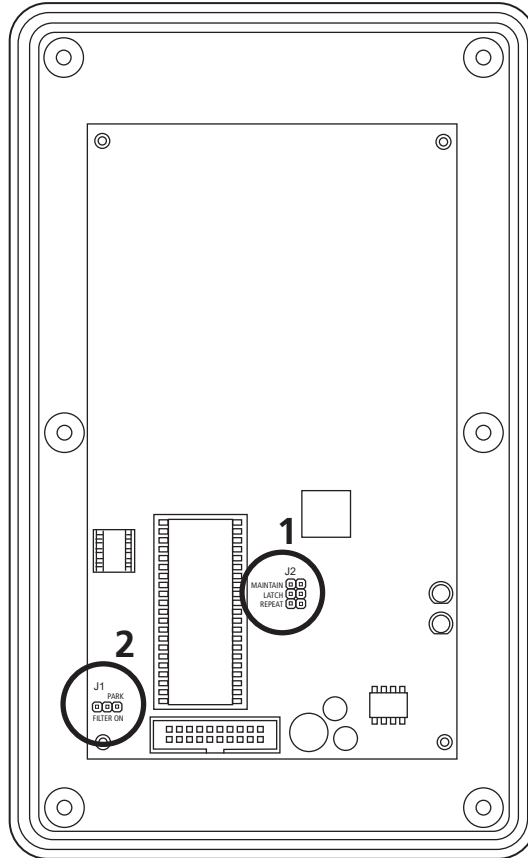
- 1 "+/-" buttons adjust the "Shot Duration" and "Pre-Pressure Delay" time.
- 2 The "Shot Duration" button displays the length of the shot time when depressed. To program a shot time press and hold the "Shot Duration" button and use the "+/-" buttons to adjust the time up and down.
- 3 The "Timer Settings" Display shows a countdown of the "Shot Duration" during an operating cycle, and displays the "Shot Duration" and "Pre-Pressure Delay" settings when each button is depressed respectively.
- 4 The "Pre-Pressure Delay" button displays the time that the pump is setup to run prior to firing a shot. To program the "Pre-Pressure Delay" press and hold the "Pre-Pressure Delay" button and use the "+/-" buttons to adjust the time up and down.
- 5 The "Event" LEDs illuminate when a programmed function is activated. The "Pump On" LED activates when the pump is active and the "Solenoid On" LED activates when a shot is fired.



PC-100-D Programmable Shot Timer

PC-100-D-XPBM, 220 VAC

PC-100-D-G569, 220 VAC



1	MAINTAIN LATCH REPEAT	Maintain Mode Timer will output shot once while input signal is present. If input signal is lost the shot will end.
	MAINTAIN LATCH REPEAT	Latch Mode Timer will output shot once upon reception of an input signal. A maintained input signal is not required for a complete shot cycle.
	MAINTAIN LATCH REPEAT	Repeat Mode Timer will begin shot output upon reception of an input signal. As long as the signal is maintained the programmed shot will repeat.
2	FILTER PARK ON	High Speed Signal Sensitivity Configured for high speed inputs. This includes photoelectric sensors, proximity switches, etc.
	PARK ON FILTER	Low Speed Signal Sensitivity Configured for low speed inputs. This includes limit switches and other mechanical actuators.

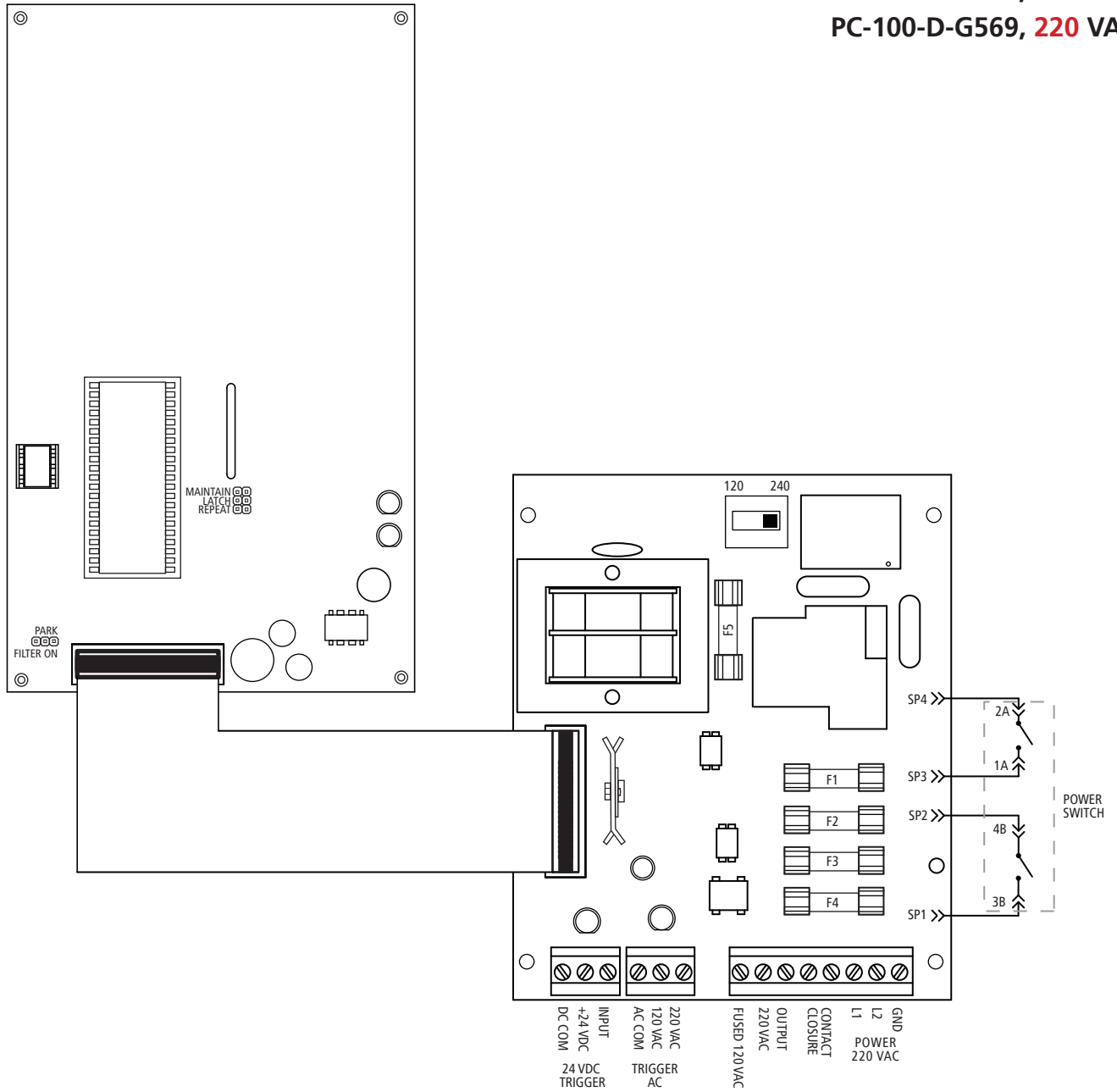




PC-100 Programmable Shot Timer

PC-100-D-XPBM, 220 VAC

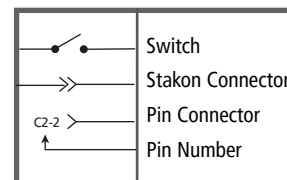
PC-100-D-G569, 220 VAC



FUSE CHART

ITEM	DESCRIPTION	REPLACE WITH	PART NO
F1	Transformer	1 A, 125 V (GMA)	214-101
F2	PC-100-D Output	5 A, 125 V (GMA)	214-105
F3	Transformer	1 A, 125 V (GMA)	214-101
F4	PC-100-D Output	5 A, 125 V (GMA)	214-105
F5	Transformer	300mA, 250 V (GMD)	214-063

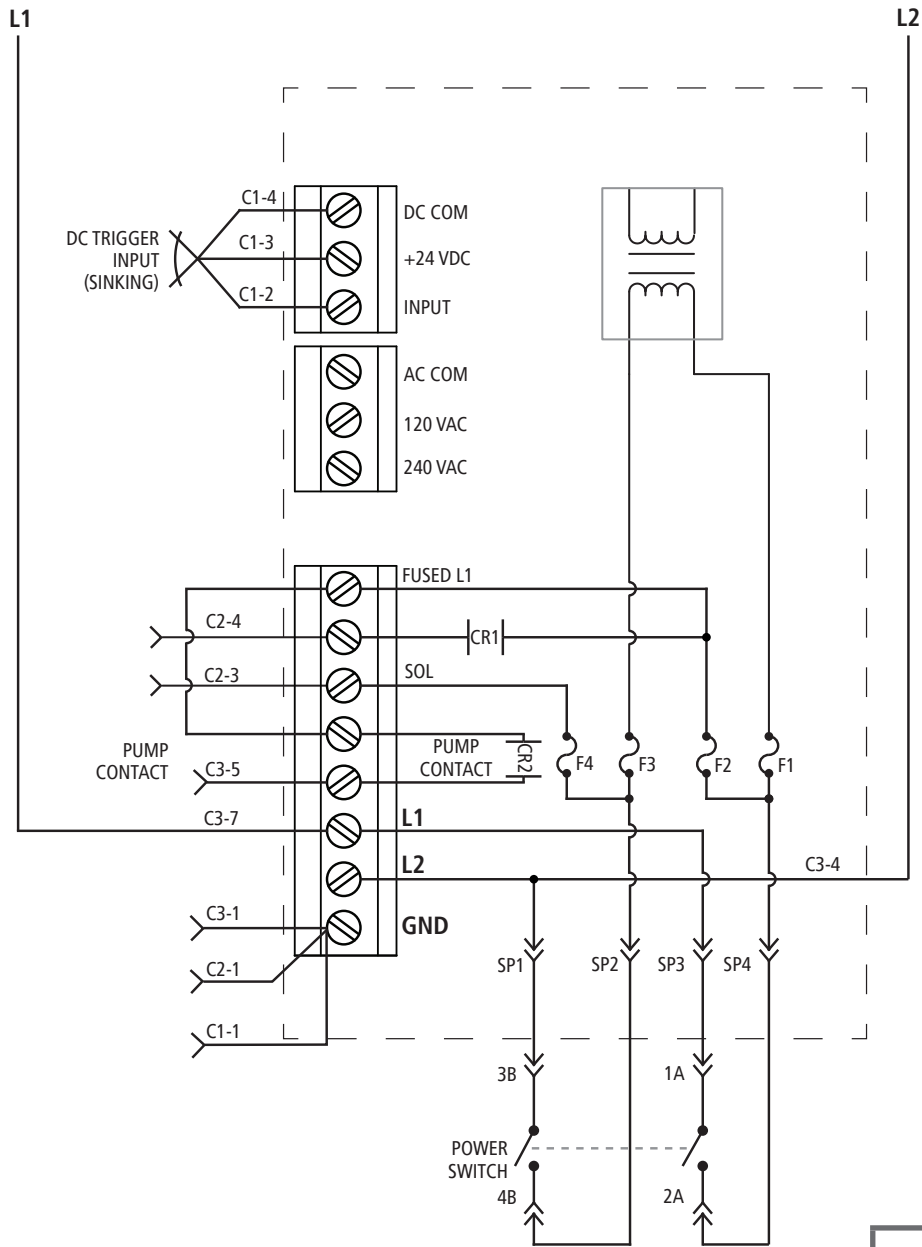
SYMBOL LEGEND





PC-100 Programmable Shot Timer

PC-100-D-XPBM, 220 VAC



SYMBOL LEGEND

	Transformer
	Fuse
	Motor
	Relay Number
	Relay (Contacts)
	Stakon Connector
	Terminal Connection
	Solenoid

FUSE CHART

ITEM	DESCRIPTION	REPLACE WITH	PART NO
F1	Transformer	1 A, 125 V (GMA)	214-101
F2	PC-100-D Output	5 A, 125 V (GMA)	214-105
F3	Transformer	1 A, 125 V (GMA)	214-101
F4	PC-100-D Output	5 A, 125 V (GMA)	214-105
F5	Transformer	300mA, 250 V (GMD)	214-063

CONNECTOR IDENTIFICATION

C1	Trigger Input
C2	Output to Solenoid
C3	Power & Pump Interface

POWER CONNECTION

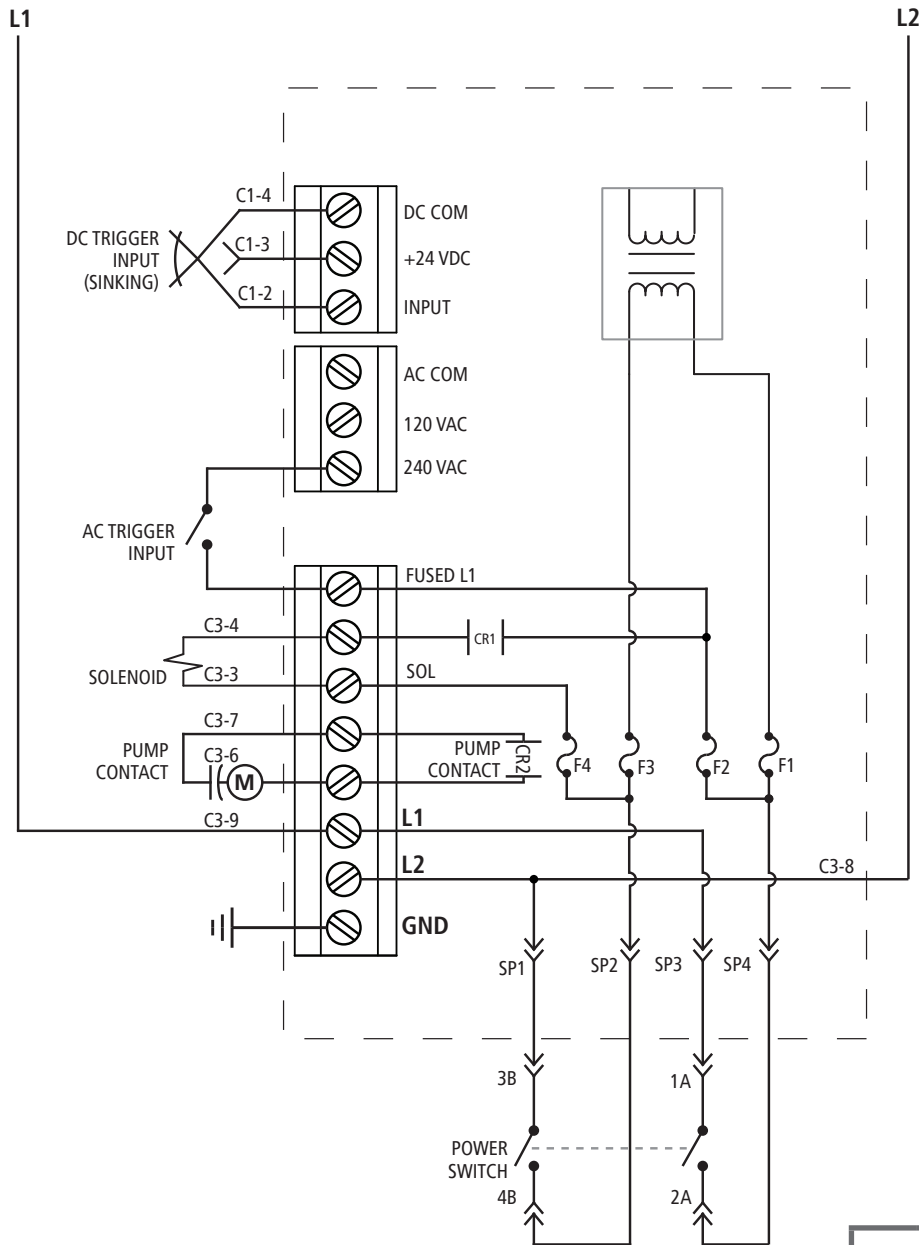
L1 ← 220 VAC → L2

CAUTION
220 VAC POWER ONLY



PC-100 Programmable Shot Timer

PC-100-D-G569, 220 VAC



SYMBOL LEGEND

	Transformer
	Fuse
	Motor
	Relay Number
	Relay (Contacts)
	Stakon Connector
	Terminal Connection
	Solenoid

FUSE CHART

ITEM	DESCRIPTION	REPLACE WITH	PART NO
F1	Transformer	1 A, 125 V (GMA)	214-101
F2	PC-100-D Output	5 A, 125 V (GMA)	214-105
F3	Transformer	1 A, 125 V (GMA)	214-101
F4	PC-100-D Output	5 A, 125 V (GMA)	214-105
F5	Transformer	300mA, 250 V (GMD)	214-063

CONNECTOR IDENTIFICATION

C1	Trigger Input
C2	Output to Solenoid
C3	Power & Pump Interface

POWER CONNECTION

L1 ← 220 VAC → L2

CAUTION

220 VAC POWER ONLY