

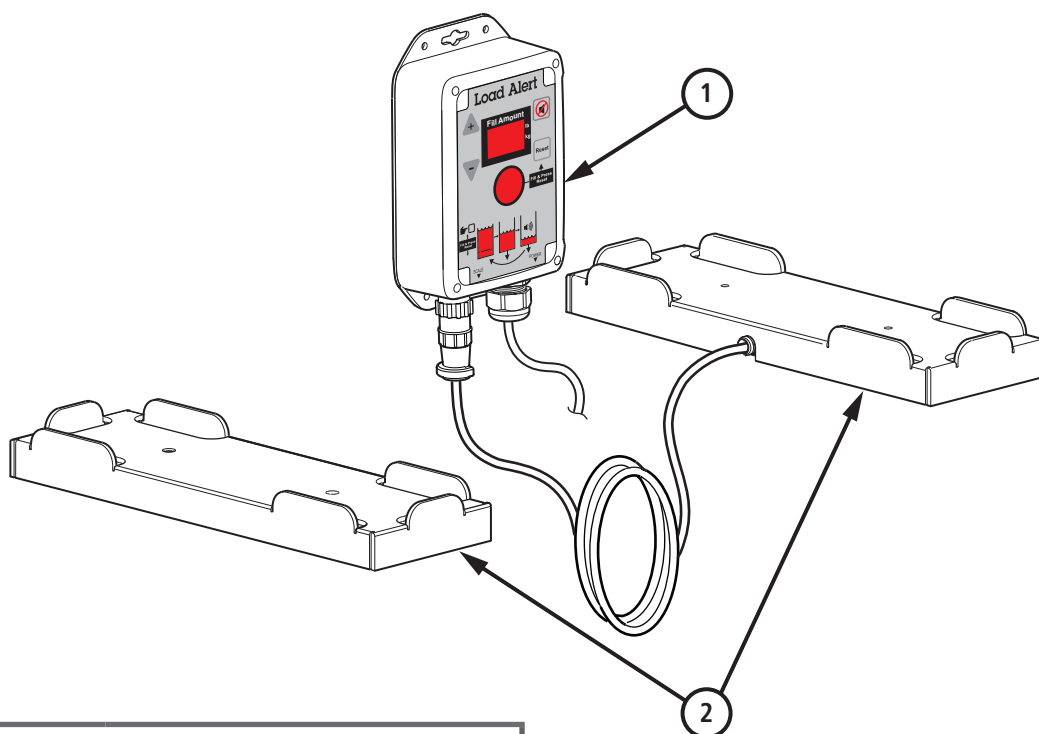


## Load Alert

### LA-X-X, 8 – 85 lb

HMT's Pro-Fill Load Alert is a weight sensing device designed to notify the operator when the melt tank needs to be re-filled.

- A full melt tank provides a steady, uninterrupted flow of hot melt.
- A full tank takes full advantage of HMT's Melt-On-Demand design.
- A full tank reduces the potential for adhesive degradation and the formation of char.
- And, most importantly, it eliminates "I forgot to fill the tank" downtime.



PART NO	DESCRIPTION
LA-W-1	120 V Wall Power (NEMA 5-15P)
LA-W-2	220 V Wall Power (Blunt-Cut Cord)
LA-M-1	120 V Machine Power (IEC C14)
LA-M-2	220 V Machine Power (IEC C14)

BILL OF MATERIALS			
ITEM	DESCRIPTION	PART NO	QTY
1	Control Box Assembly	910-120	1
2	Scale Platform Assy, 8-85 lb	910-121	1



## Load Alert 2.0 LA-X-X, 8 – 85 lb

### Installation

Place the Load Alert on HMT's standard cart or a level surface that can safely accommodate the overall weight.

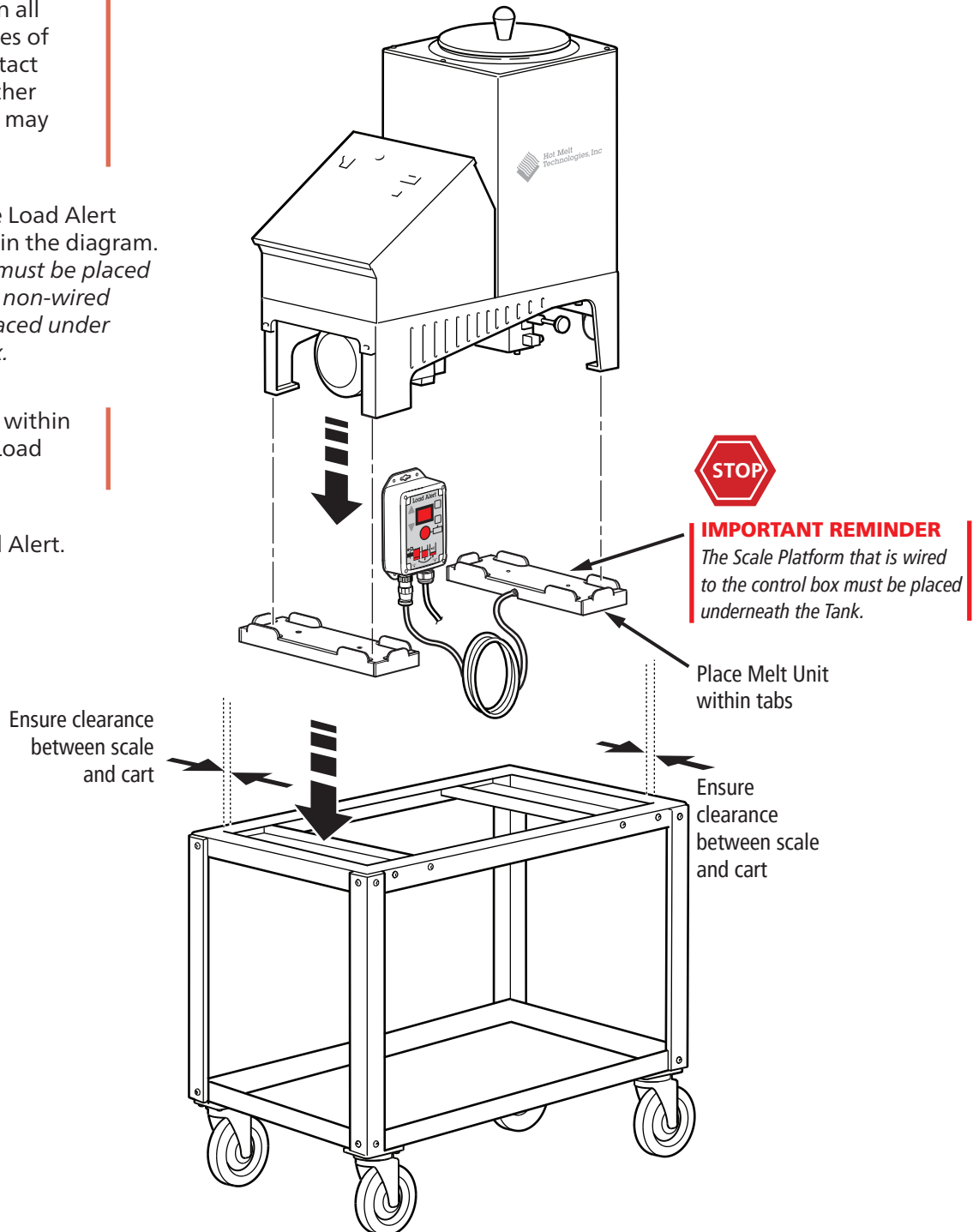
Make sure that the mounting surface is free of debris.

The Load Alert Scale Platform must have clearance on all four (4) sides. If the sides of the Scale Platform contact the melt unit cart or other objects, the Load Alert may not function correctly.

Place the melt unit on the Load Alert Scale Platforms as shown in the diagram. *The wired Scale Platform must be placed underneath the Tank. The non-wired Scale Platform must be placed under the melt unit's control box.*

The melt unit must rest within the tabs on top of the Load Alert Scale Platform.

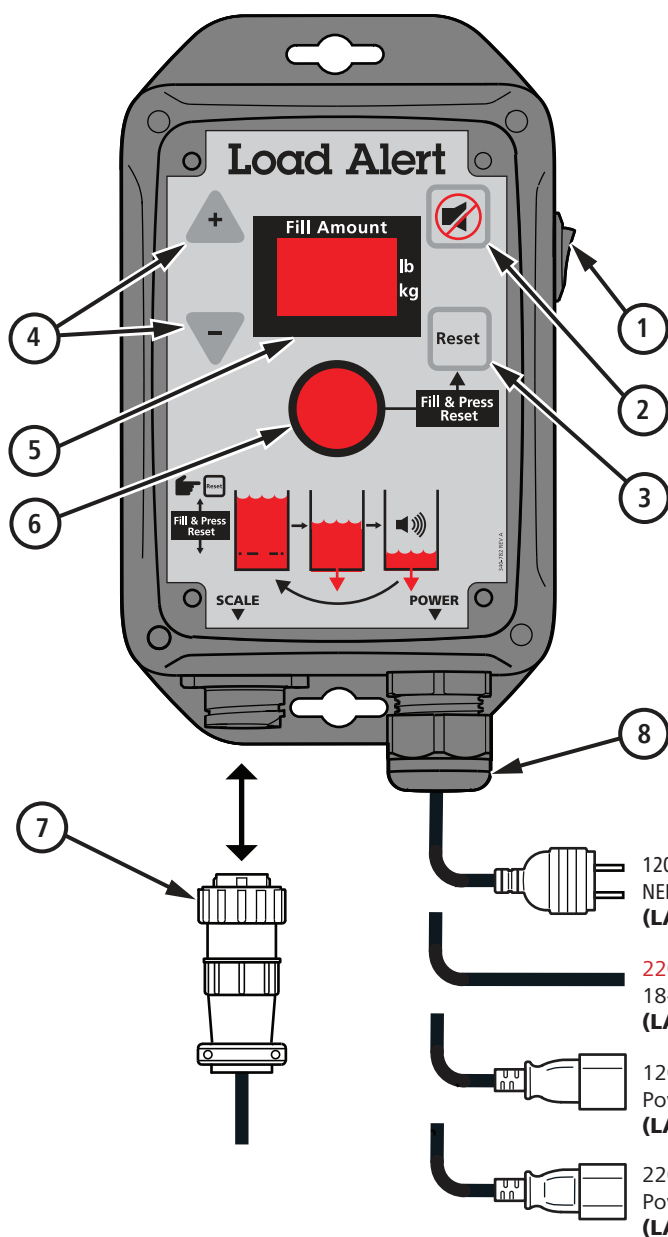
Supply power to the Load Alert.  
120–240 VAC (0.25 A)





## Load Alert 2.0

LA-X-X, 8 – 85 lb



- 1 Power Switch
- 2 **Quiet Button**  
Silences audible alarm for 5 minutes
- 3 **Reset Button**  
Used to Set/Reset 100% full level during setup
- 4 **Increment/Decrement Buttons**  
Increase or decrease "Fill Amount"
- 5 **Fill Amount Display**
- 6 **LED indicator**  
Flashes and alarms to indicate that the operator should fill the tank
- 7 **Scale Platform Connector**
- 8 **Power Input**



### IMPORTANT REMINDER

Remember, Load Alert is a weight sensing system. During use, **DO NOT** add or remove items from the system that might affect the over-all system weight. For example, handguns should not be mounted to the machine. Lifting and replacing the handgun will affect the Load Alert weight calibration and response accuracy.

### Setup Instructions:

1. Load the tank with adhesive
2. Choose the "Fill Amount" (see chart)
3. Press and hold "Reset" to tare the system weight to the current fill level

### Operation

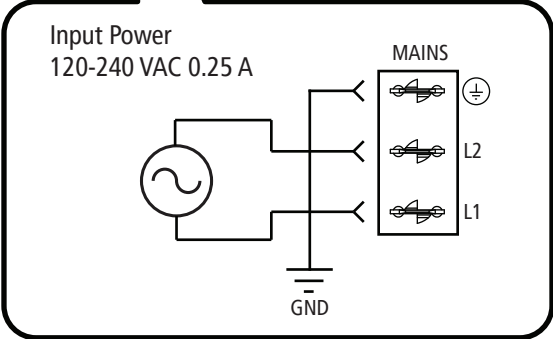
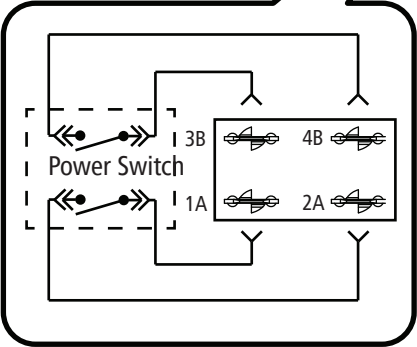
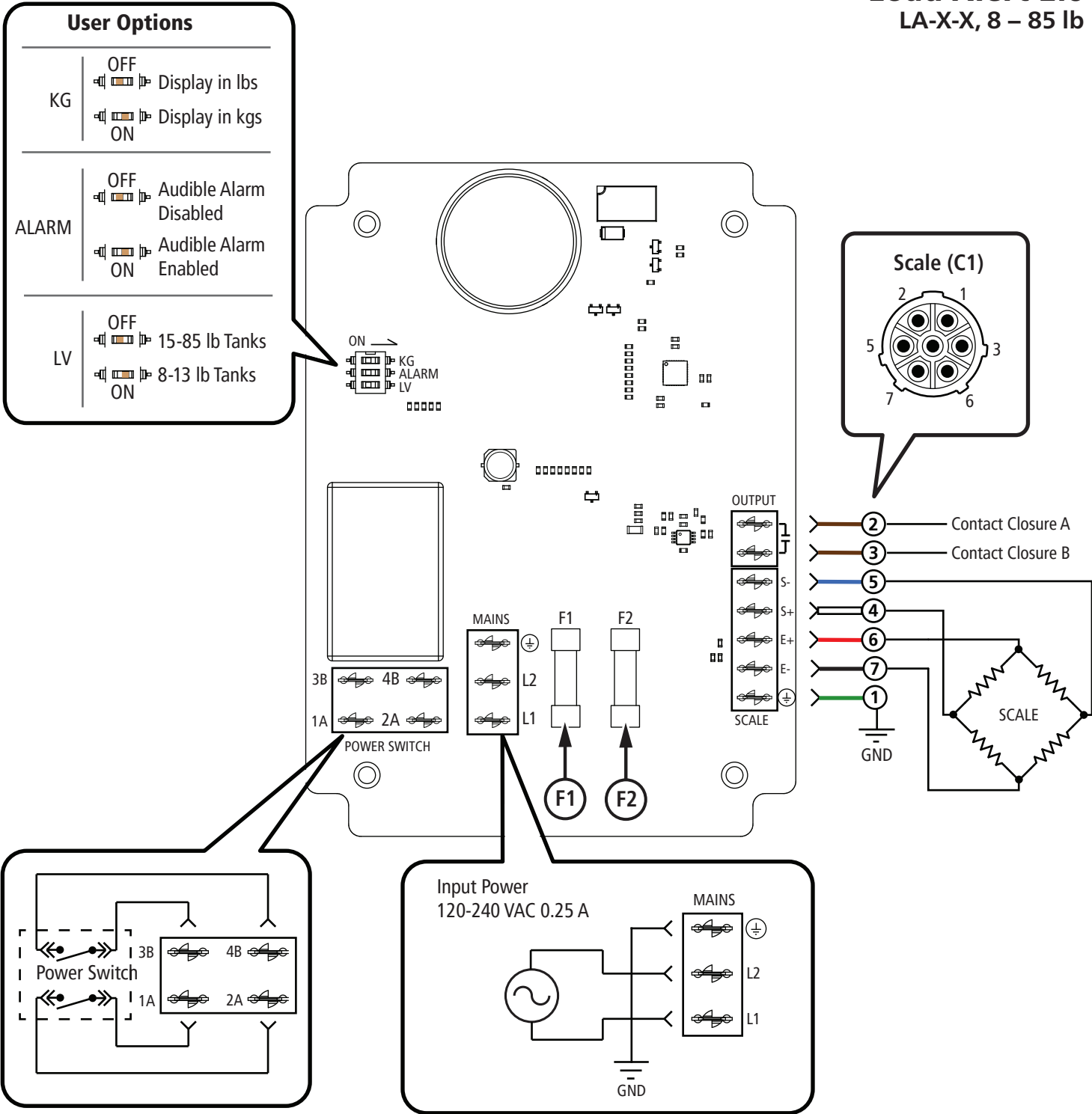
1. Operate system normally
2. Visual and Audible alarms when refill is required
3. Reload tank and adhesive. Alarm will automatically reset
4. Repeat Process

Benchmark & ProFlex Tank Size (lb)	Recommended Setting for Manual Re-Loading (lb)
15	3 lb
25 or 35	5 lb
50 or 85	10 lb

\*It is recommended to repeat setup step 3 once after the first refill due to the difference in volume between melted and unmelted adhesive



Load Alert 2.0  
LA-X-X, 8 – 85 lb



POWER CONNECTION
120-240 VAC, 1PH 0.25A

CONNECTOR IDENTIFICATION
C1   Scale

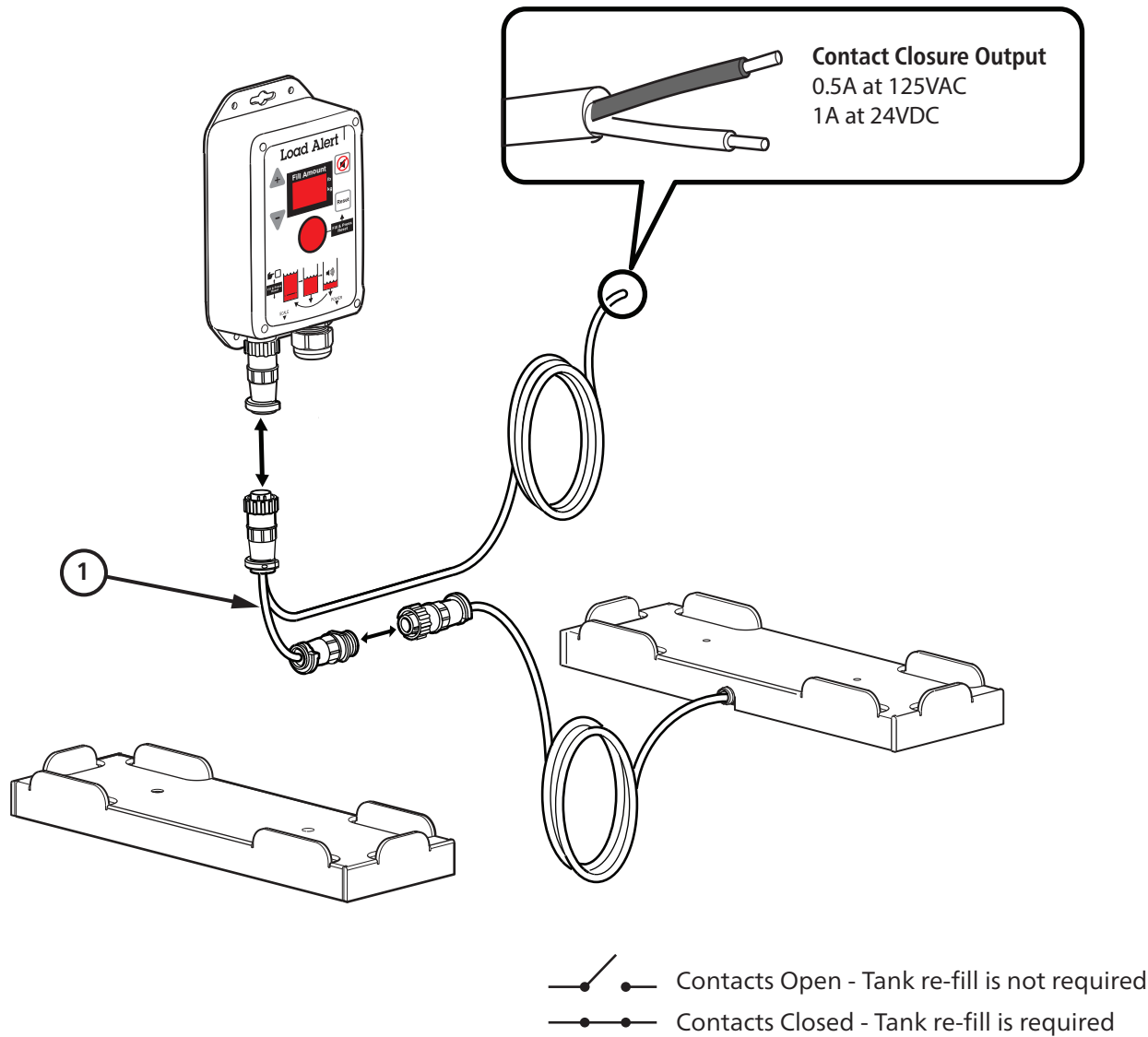
FUSE CHART			
ITEM	DESCRIPTION	REPLACE WITH	PART NO
F1/ F2	Power Supply	0.5 A, 250 VAC (GMD)	214-501



**Load Alert 2.0**  
LA-X-X, 8 – 85 lb

**Load Alert Output Harness (Optional)**

The Load Alert Output Harness provides a dry contact closure output to remotely signal when the Load Alert is calling for the Tank to be filled.



BILL OF MATERIALS			
ITEM	DESCRIPTION	PART NO	QTY
1	Load Alert Output Harness	910-122	1



## Load Alert 2.0 LA-X-X, 8 – 85 lb

### Parts Included

- (4) 321-070 Self-tapping fasteners
- (4) 223-420 3" Snap-together fasteners "velcro"
- (1) Mounting template

### Mounting Instructions

#### Method #1 (Self-tapping Screws)

Use the template on this sheet to locate the mounting hole centers. Mount the 910-120, Load Alert 2.0 Control Box using the four (4) 321-070, self-tapping screws provided.

#### Method #2 (Snap-together Fastener "Velcro")

For best results, ensure that the back of the control box and the mating surface are clean and free of debris. To adhere the 223-420, Snap-Together Fasteners "Velcro" to the 910-120, Load Alert 2.0 Control Box and mating surface, remove the adhesive backer from the "Velcro" and press firmly onto the control box and mating surface as shown on the template.

